

REV.	ECN NO.	DATE
A	RELEASED	9/10/2003
B	405002	5/14/2004
C	502001	2/25/2005
D	603001	3/2/2006

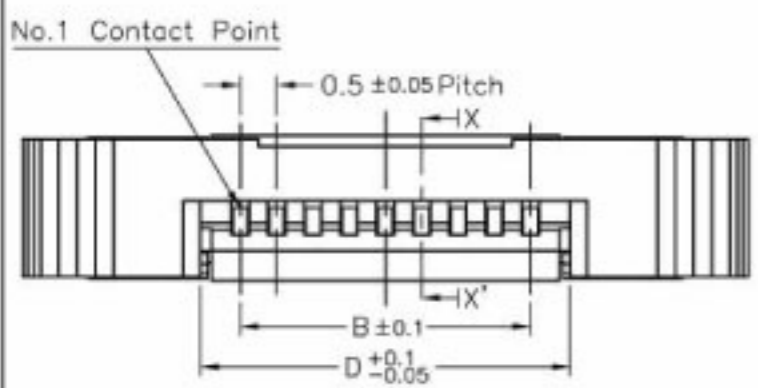
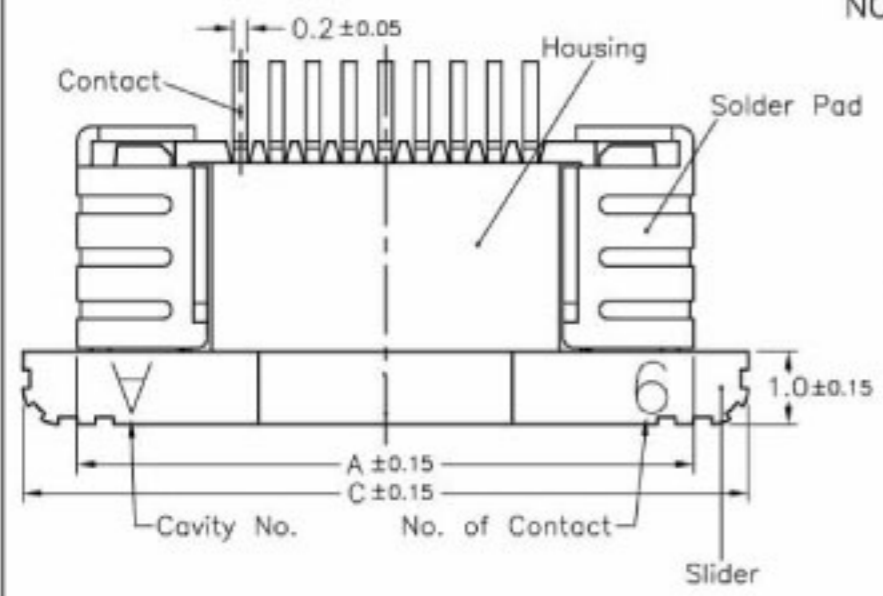
**NOTE:**

1. MATERIAL:  
 HOUSING: THERMOPLASTIC  
 SLIDER: THERMOPLASTIC  
 CONTACTS: COPPER ALLOY  
 SOLDER PAD: COPPER ALLOY

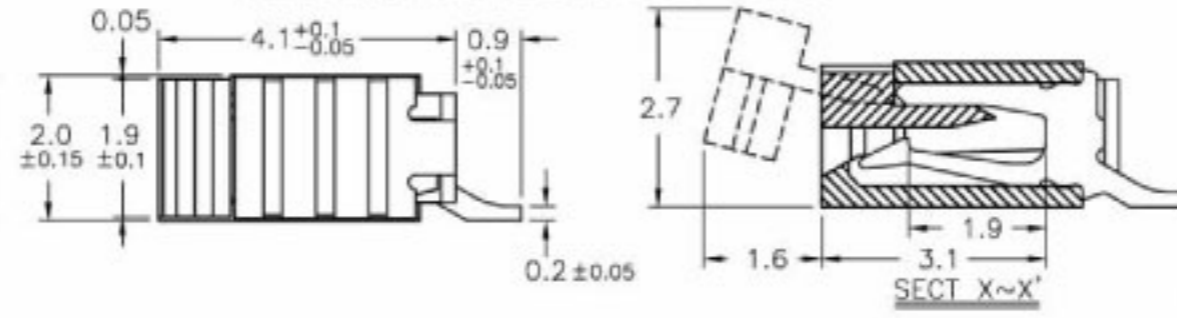
2. PLATING:  
 CONTACTS: SEE ORDERING INFORMATION  
 SOLDER PAD: SEE ORDERING INFORMATION

3. PART NO.:  
**BL112-xx RL - xx xx**  
 00-TIN OVER NICKEL  
 ND-TIN OVER NICKEL (LEAD FREE)  
 1G-1U" GOLD OVER NICKEL  
 3G-3U" GOLD OVER NICKEL  
 5G-5U" GOLD OVER NICKEL  
 PACKAGING  
 TA-EMBOSSED TAPE  
 TU-TUBE  
 RIGHT ANGLE (LOWER CONTACT TYPE)  
 NO. OF CONTACTS

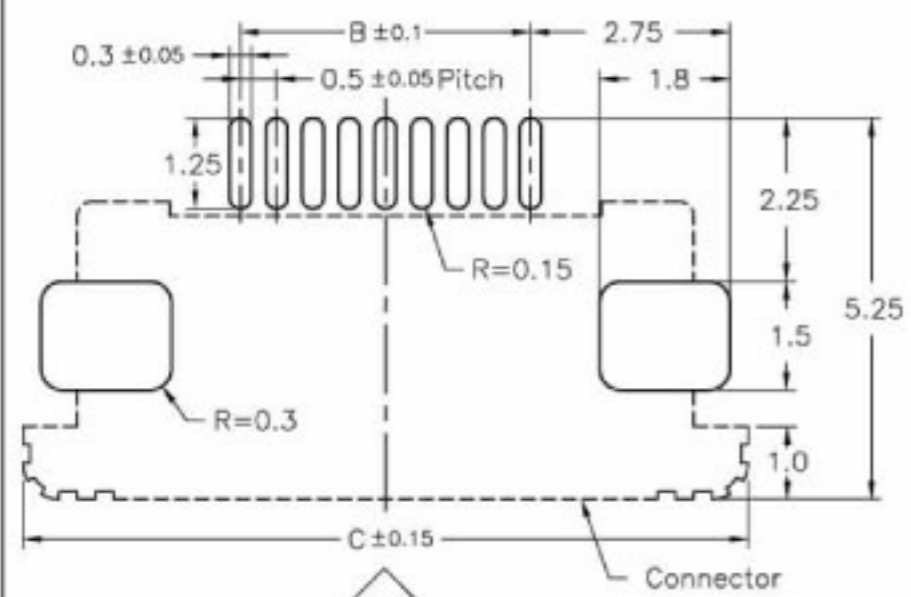
4. RATING:  
 OPERATING VOLTAGE: 50V  
 CURRENT RATING: 0.4A  
 OPERATING TEMPERATURE: -55°C ~ +85°C



**PCB Layout**



**Applicable FPC**



**FPC/FFC INSERT DIRECTION**

No. of Contacts	Part Number	DIM. A	DIM. B	DIM. C	DIM. D
4	BL112-4RL	6	1.5	7.5	2.6
5	BL112-5RL	6.5	2	8	3.1
6	BL112-6RL	7	2.5	8.5	3.6
7	BL112-7RL	7.5	3	9	4.1
8	BL112-8RL	8	3.5	9.5	4.6
9	BL112-9RL	8.5	4	10	5.1
10	BL112-10RL	9	4.5	10.5	5.6
11	BL112-11RL	9.5	5	11	6.1
12	BL112-12RL	10	5.5	11.5	6.6
13	BL112-13RL	10.5	6	12	7.1
14	BL112-14RL	11	6.5	12.5	7.6
15	BL112-15RL	11.5	7	13	8.1
16	BL112-16RL	12	7.5	13.5	8.6
17	BL112-17RL	12.5	8	14	9.1
18	BL112-18RL	13	8.5	14.5	9.6
19	BL112-19RL	13.5	9	15	10.1
20	BL112-20RL	14	9.5	15.5	10.6
21	BL112-21RL	14.5	10	16	11.1
22	BL112-22RL	15	10.5	16.5	11.6
23	BL112-23RL	15.5	11	17	12.1
24	BL112-24RL	16	11.5	17.5	12.6
25	BL112-25RL	16.5	12	18	13.1
26	BL112-26RL	17	12.5	18.5	13.6
27	BL112-27RL	17.5	13	19	14.1
28	BL112-28RL	18	13.5	19.5	14.6
29	BL112-29RL	18.5	14	20	15.1
30	BL112-30RL	19	14.5	20.5	15.6
31	BL112-31RL	19.5	15	21	16.1
32	BL112-32RL	20	15.5	21.5	16.6
33	BL112-33RL	20.5	16	22	17.1
34	BL112-34RL	21	16.5	22.5	17.6
35	BL112-35RL	21.5	17	23	18.1
36	BL112-36RL	22	17.5	23.5	18.6
37	BL112-37RL	22.5	18	24	19.1
38	BL112-38RL	23	18.5	24.5	19.6
39	BL112-39RL	23.5	19	25	20.1
40	BL112-40RL	24	19.5	25.5	20.6
41	BL112-41RL	24.5	20	26	21.1
42	BL112-42RL	25	20.5	26.5	21.6
43	BL112-43RL	25.5	21	27	22.1
44	BL112-44RL	26	21.5	27.5	22.6
45	BL112-45RL	26.5	22	28	23.1
46	BL112-46RL	27	22.5	28.5	23.6
47	BL112-47RL	27.5	23	29	24.1
48	BL112-48RL	28	23.5	29.5	24.6
49	BL112-49RL	28.5	24	30	25.1
50	BL112-50RL	29	24.5	30.5	25.6

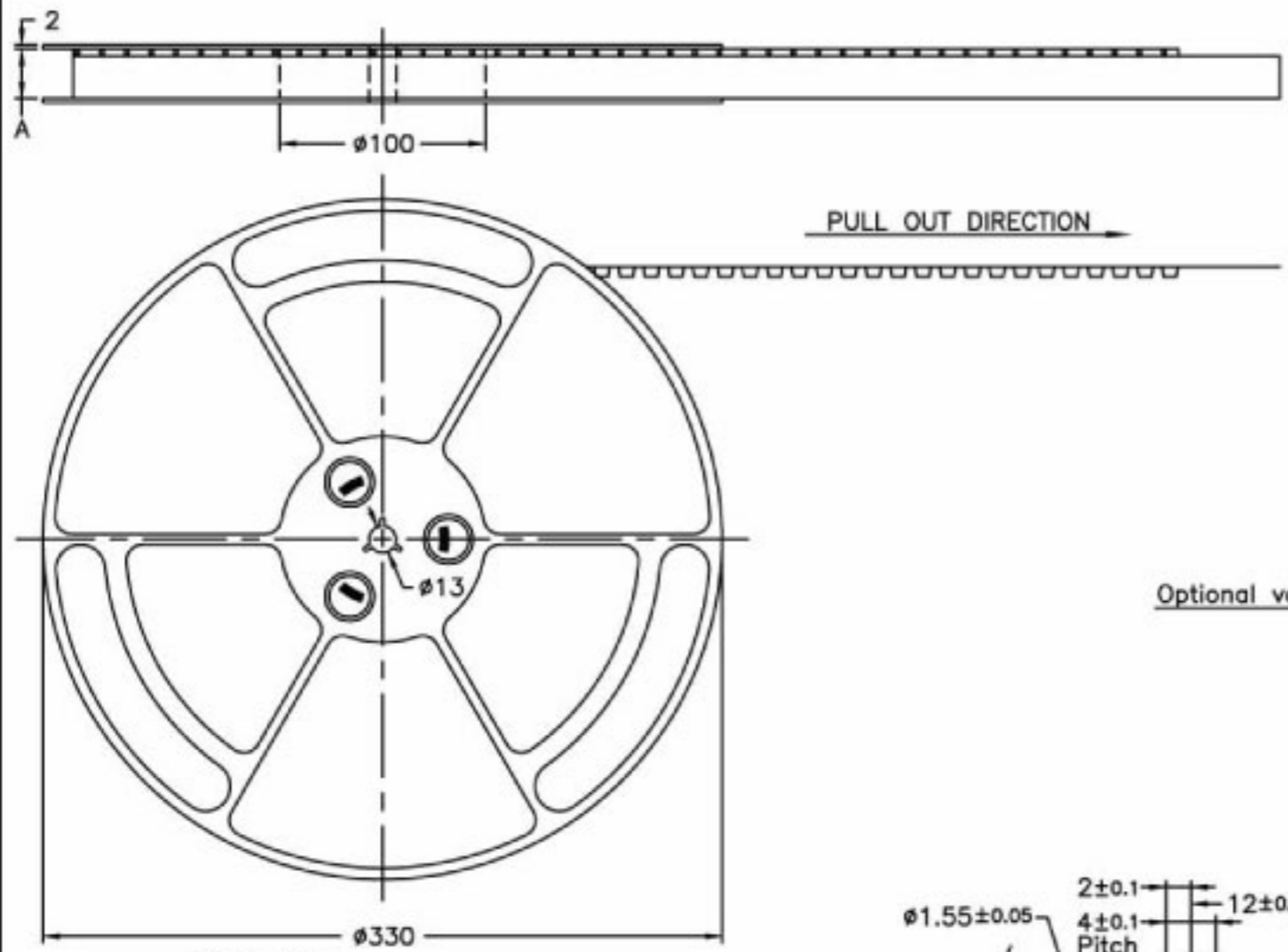
TOLERANCE UNLESS SPECIFIED		REV.	D	DR. BY	Bonnie Li	MATERIAL	See Note 1.
LINEAR	ANGLE	SHEET	1/7	CHK. BY	S.T.Lin	FINISH	See Note 2.
X ± 0.2	X'	SCALE	8/1	APP. BY	S.T.Lin	DATE	3/2/2006
XX ± 0.15	X''	UNIT	mm			PART NO.	See Note 3.
XXX ± 0.05							



TITLE 0.5mm Pitch FPC/FFC Connector  
 DWG NO. D:\BOOK\BOOK\BL112\HP

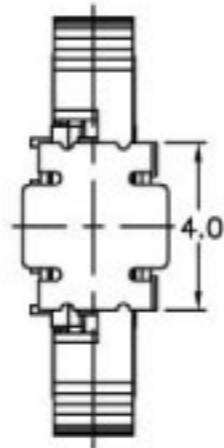
# EMBOSSED TAPE PACKING BL112 SERIES S TYPE

REV.	ECN NO.	DATE
A	RELEASED	10/9/2003

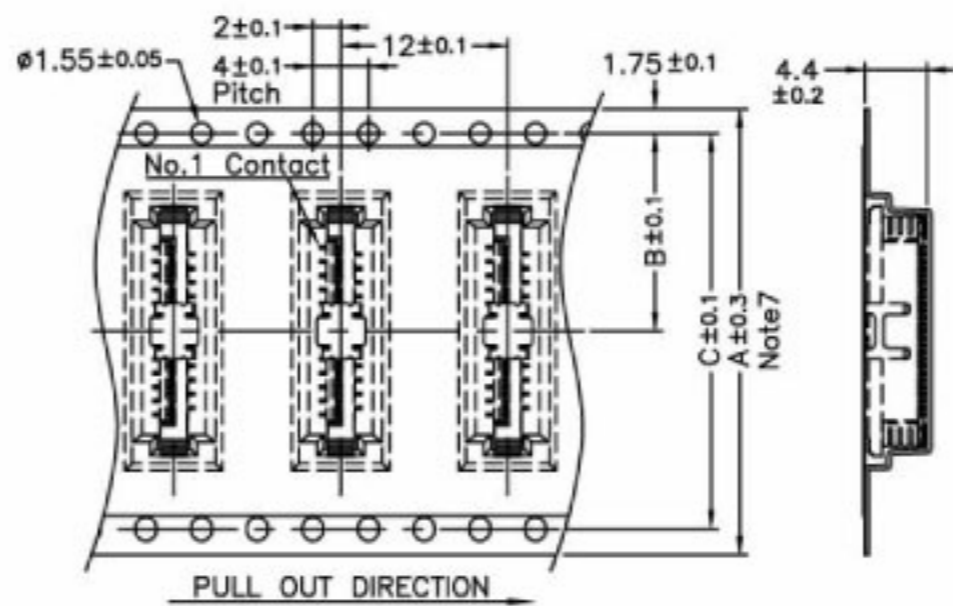
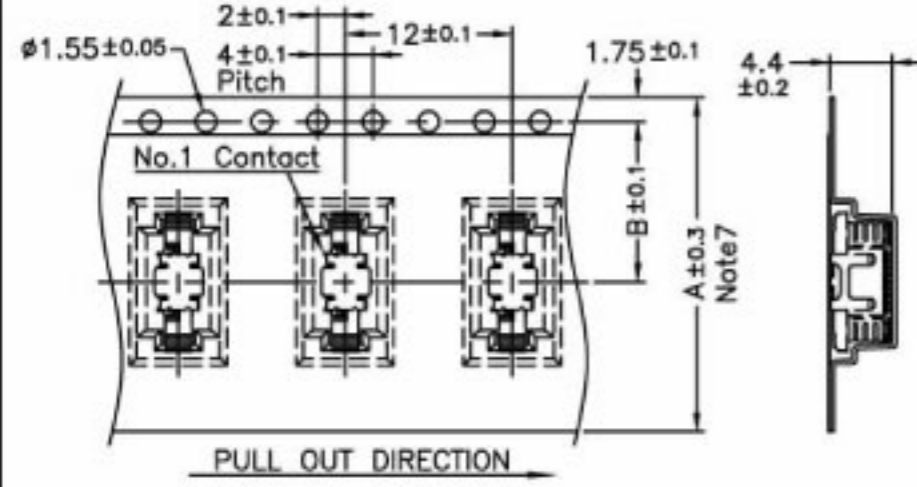
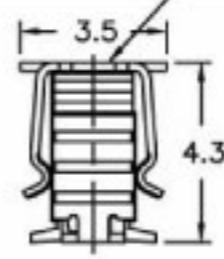


**Note:**

- 1.10 sprocket hole pitch cumulative tolerance  $\pm 0.2$ .
2. Carrier camber is within 1 mm in 100mm.
3. Material : Black Conductive Polystyrene Alloy  
100% recyclable.
4. All dimensions meet EIA-481-3 requirements.
5. Thickness :  $0.3 \pm 0.05$ mm
6. Component load per 13" reel : 1000 pcs.
7. For tape width (dimension A) 24mm a pilot hole is provided on one side.  
For tape width (dimension A) 32mm and 44mm pilot holes are provided on both sides.



Optional vacuum cap for robotic placement



No. of Contacts	Part Number	DIM. A Note7	DIM. B	DIM. C
4	BL112-4S	24	11.5	—
23	BL112-23S			
24	BL112-24S	32	14.2	28.4
33	BL112-33S			
34	BL112-34S	44	20.2	40.4
50	BL112-50S			

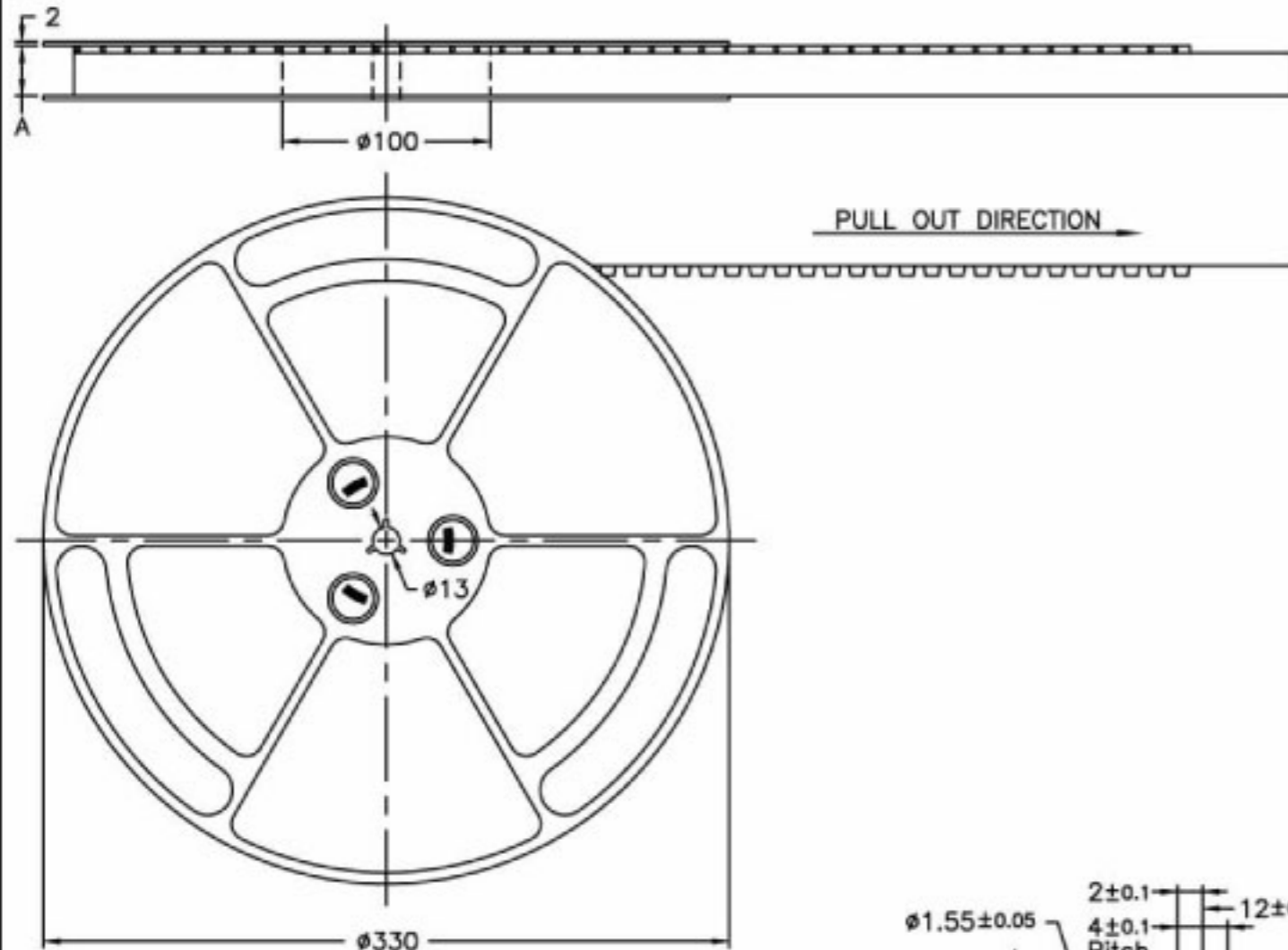
TOLERANCE UNLESS SPECIFIED		REV.	A	DR. BY	Bonnie Li	MATERIAL	See Note3
LINEAR	ANGLE	SHEET	5/7	CHK. BY	S.T.Lin	FINISH	
.XX	.X	SCALE		APP. BY	S.T.Lin	DATE	10/9/2003
.XXX		UNIT	mm			PART NO.	BL112-xxS



TITLE 0.5mm Pitch FPC/FFC Connector  
DWG NO. D\BOOK\BOOK\BL112\HP

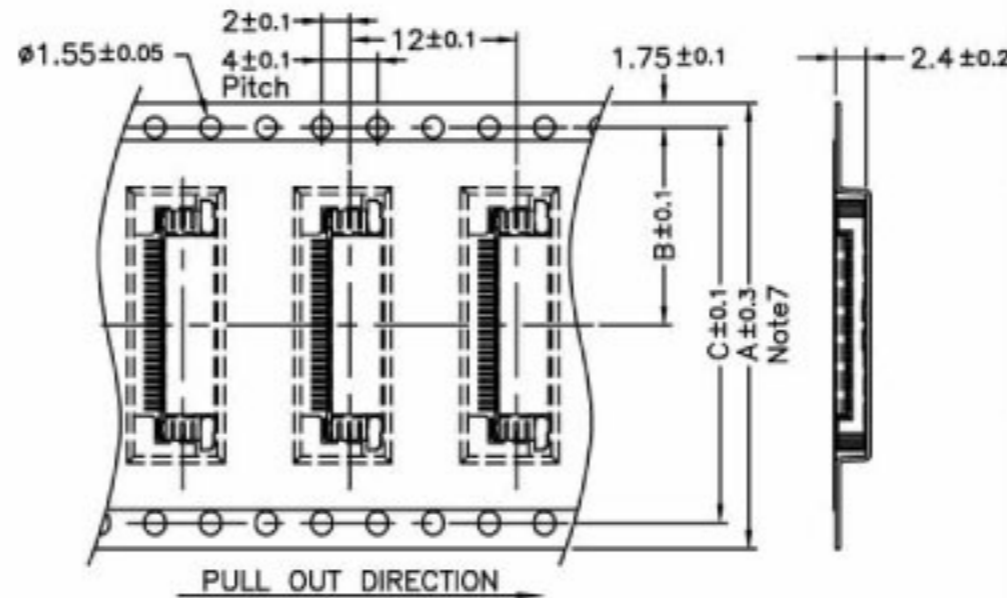
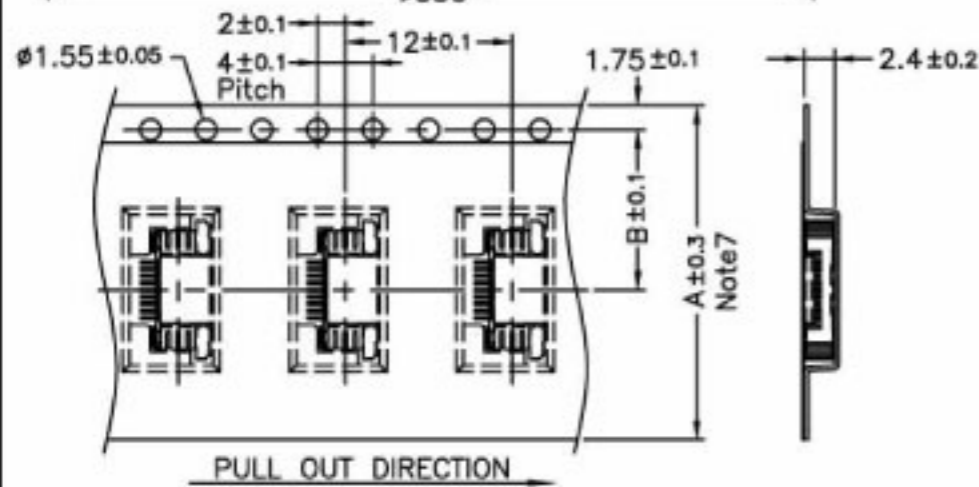
# EMBOSSED TAPE PACKING BL112 SERIES RIGHT ANGLE TYPE

REV.	ECN NO.	DATE
A	RELEASED	10/9/2003



**Note:**

1. 10 sprocket hole pitch cumulative tolerance  $\pm 0.2$ .
2. Carrier camber is within 1 mm in 100mm.
3. Material : Black Conductive Polystyrene Alloy  
100% recyclable.
4. All dimensions meet EIA-481-3 requirements.
5. Thickness :  $0.3 \pm 0.05$ mm
6. Component load per 13" reel : 2000 pcs.
7. For tape width (dimension A) 24mm a pilot hole is provided on one side.  
For tape width (dimension A) 32mm and 44mm pilot holes are provided on both sides.



No. of Contacts	Part Number	DIM. A Note7	DIM. B	DIM. C
4	BL112-4RU BL112-4RL	24	11.5	—
23	BL112-23RU BL112-23RL			
24	BL112-24RU BL112-24RL	32	14.2	28.4
33	BL112-33RU BL112-33RL			
34	BL112-34RU BL112-34RL	44	20.2	40.4
50	BL112-50RU BL112-50RL			

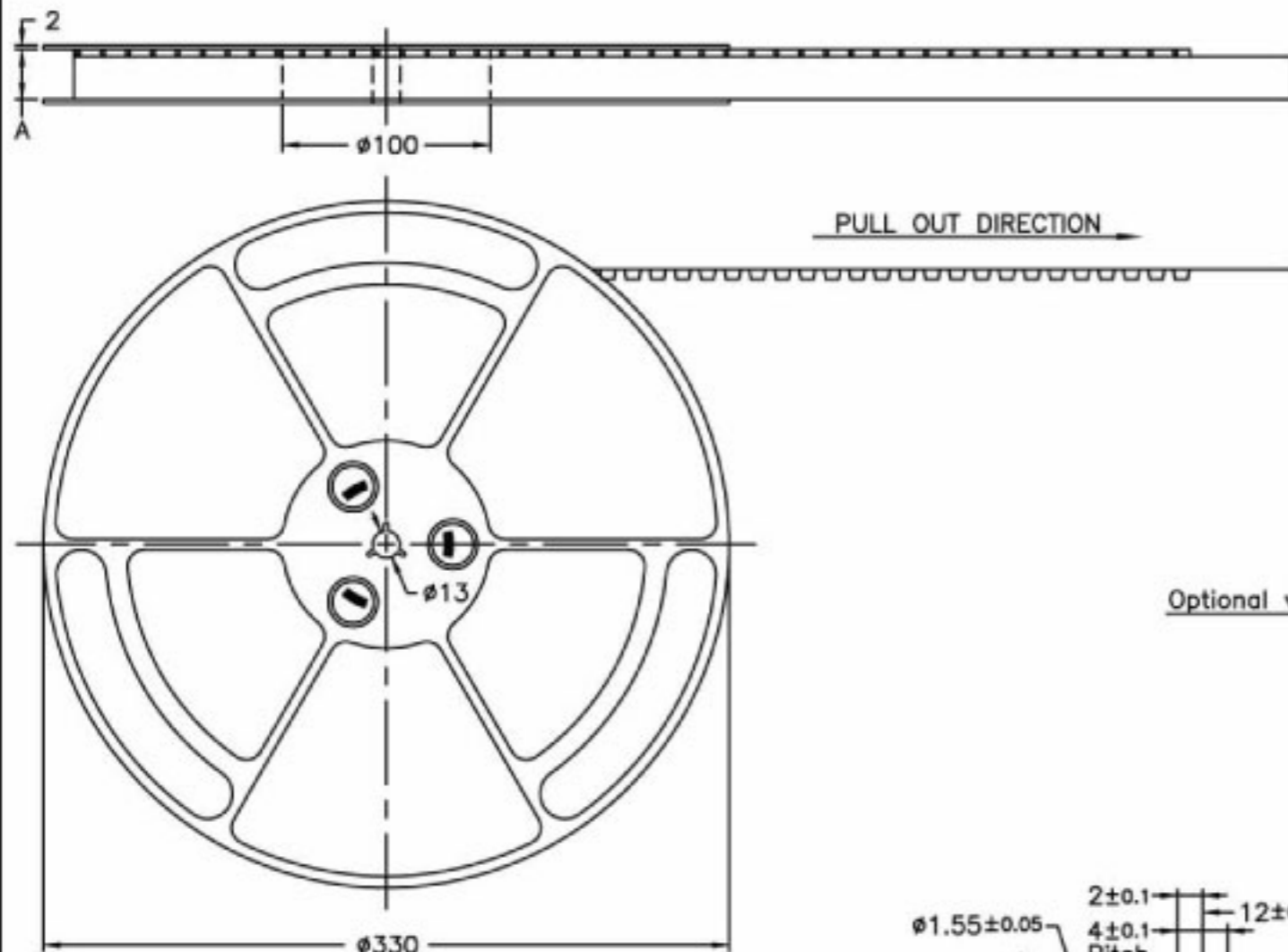
TOLERANCE UNLESS SPECIFIED		REV.	A	DR. BY	Bonnie Li	MATERIAL	See Note3
LINEAR	ANGLE	SHEET	6/7	CHK. BY	S.T.Lin	FINISH	
.XX	.X	SCALE		APP. BY	S.T.Lin	DATE	10/9/2003
.XXX		UNIT	mm			PART NO.	BL112-xxRU&RL



TITLE 0.5mm Pitch FPC/FFC Connector  
DWG NO. D\BOOK\BOOK\BL112\HP

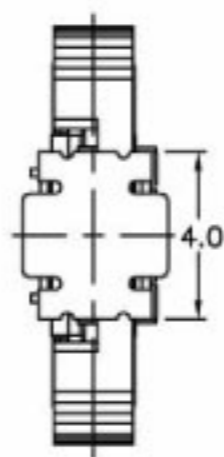
# EMBOSSED TAPE PACKING BL112 SERIES SX TYPE

REV.	ECN NO.	DATE
A	RELEASED	10/9/2003

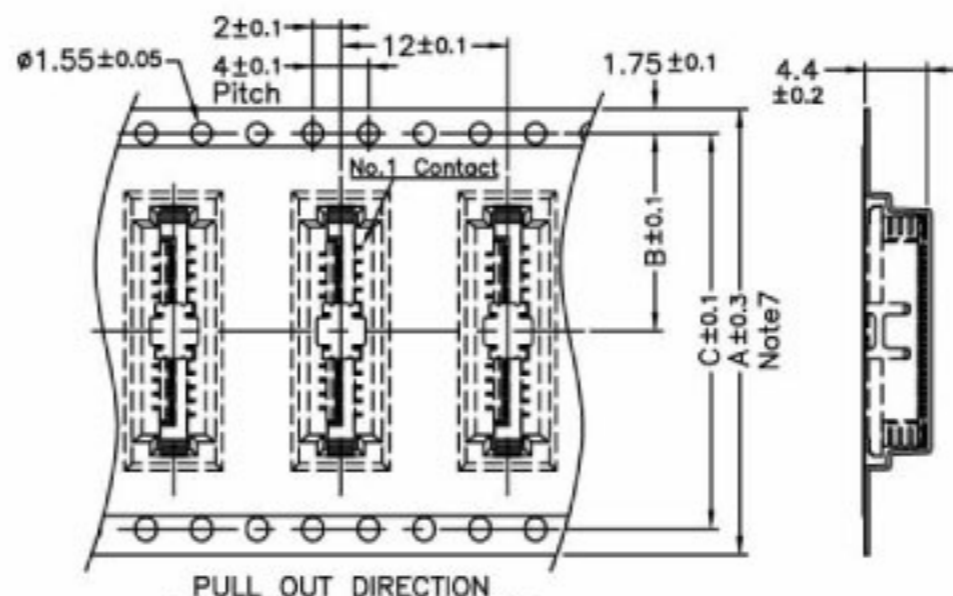
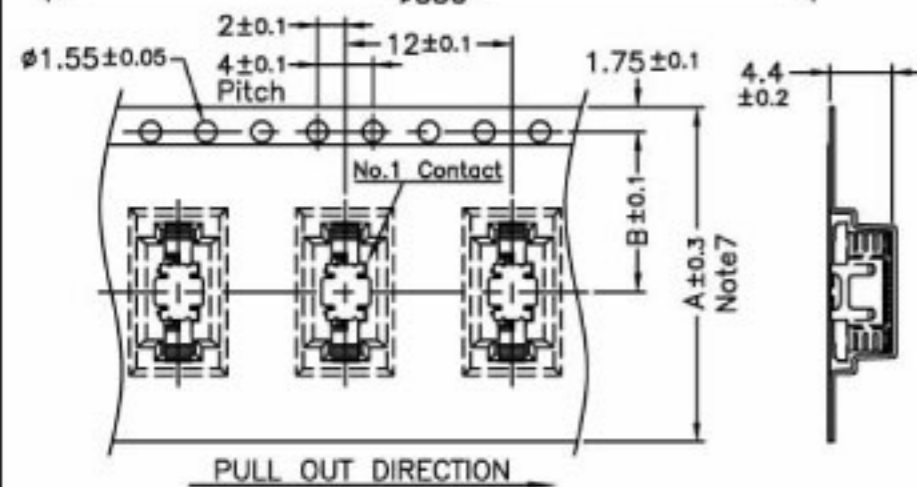
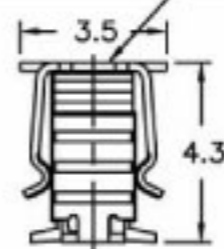


### Note:

- 1.10 sprocket hole pitch cumulative tolerance  $\pm 0.2$ .
2. Carrier camber is within 1 mm in 100mm.
3. Material : Black Conductive Polystyrene Alloy  
100% recyclable.
4. All dimensions meet EIA-481-3 requirements.
5. Thickness :  $0.3 \pm 0.05$ mm
6. Component load per 13" reel : 1000 pcs.
7. For tape width (dimension A) 24mm a pilot hole is provided on one side.  
For tape width (dimension A) 32mm and 44mm pilot holes are provided on both sides.



Optional vacuum cap for robotic placement



No. of Contacts	Part Number	DIM. A Note 7	DIM. B	DIM. C
4	BL112-4SX	24	11.5	—
23	BL112-23SX			
24	BL112-24SX	32	14.2	28.4
33	BL112-33SX			
34	BL112-34SX	44	20.2	40.4
50	BL112-50SX			

TOLERANCE UNLESS SPECIFIED		REV.	A	DR. BY	Bonnie Li	MATERIAL	See Note 3
LINEAR	ANGLE	SHEET	7/7	CHK. BY	S.T.Lin	FINISH	
.XX	.X	SCALE		APP. BY	S.T.Lin	DATE	10/9/2003
.XXX		UNIT	mm			PART NO.	BL112-xxSX



TITLE 0.5mm Pitch FPC/FFC Connector  
DWG NO. D:\BOOK\BOOK\BL112\HP