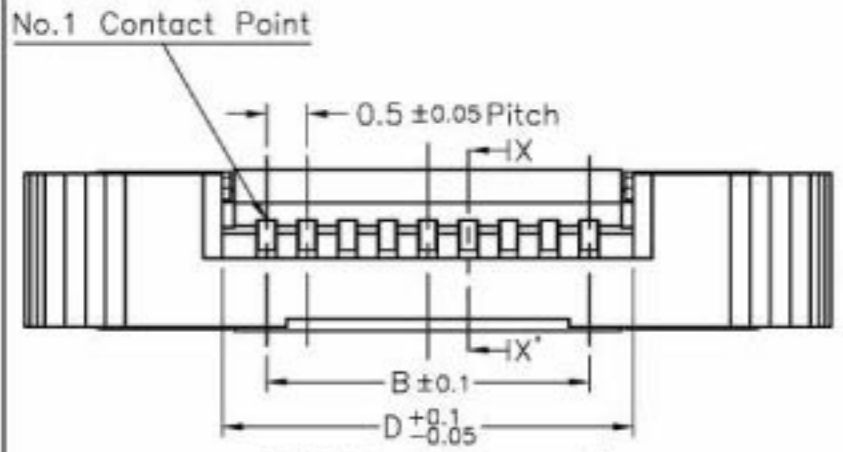
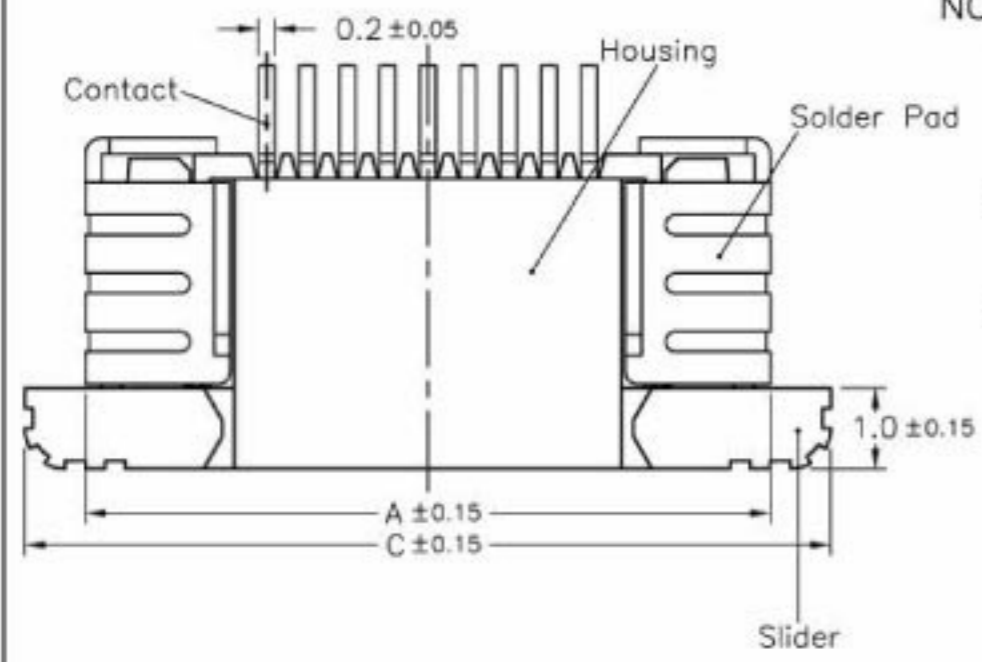


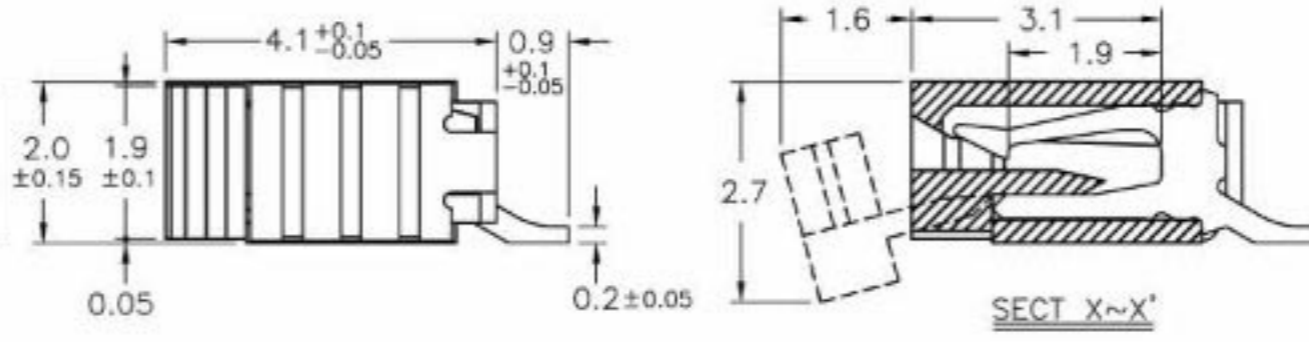
REV.	ECN NO.	DATE
A	RELEASED	9/10/2003
B	405002	5/14/2004
C	502001	2/25/2005
D	603001	3/2/2006

NOTE:

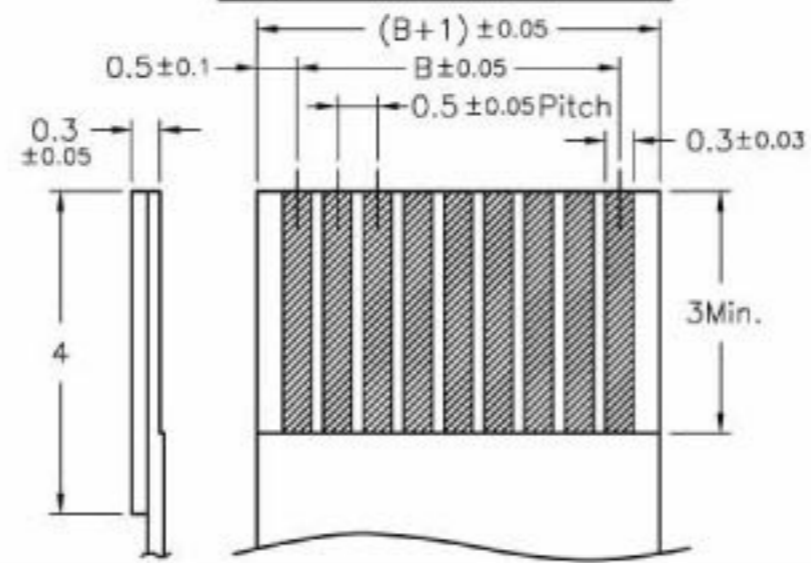
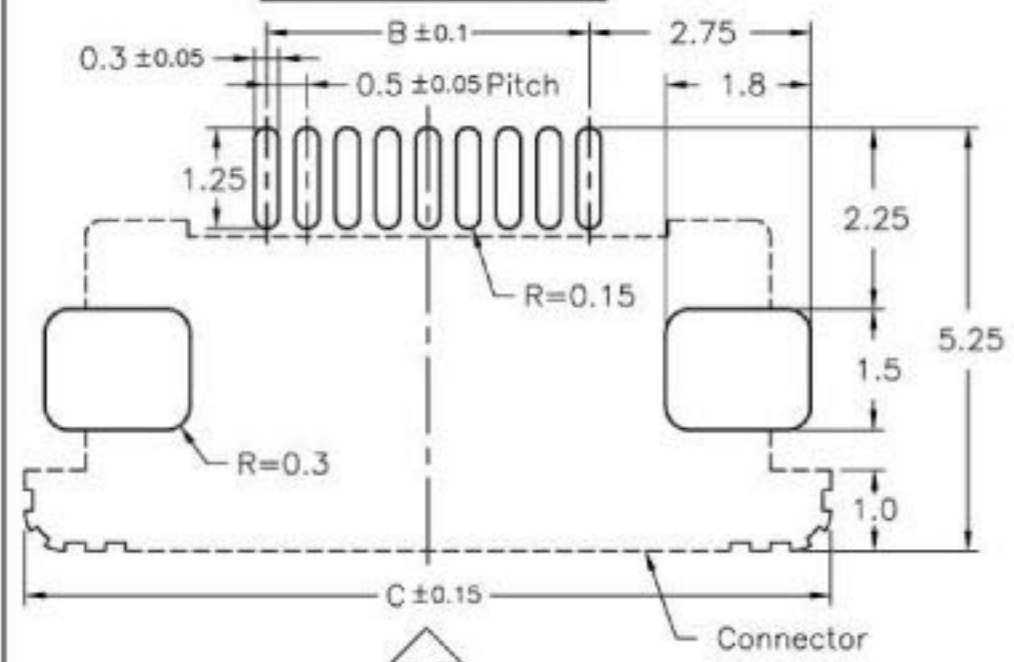
- MATERIAL:**
HOUSING:THERMOPLASTIC
SLIDER:THERMOPLASTIC
CONTACTS:COPPER ALLOY
SOLDER PAD:COPPER ALLOY
- PLATING:**
CONTACTS:SEE ORDERING INFORMATION
SOLDER PAD:SEE ORDERING INFORMATION
- PART NO.:**
BL112- xx RU - xx xx
00-TIN OVER NICKEL
ND-TIN OVER NICKEL(LEAD FREE)
1G-1U" GOLD OVER NICKEL
3G-3U" GOLD OVER NICKEL
5G-5U" GOLD OVER NICKEL
PACKAGING
TA-EMBOSSED TAPE
TU-TUBE
RIGHT ANGLE(UPPER CONTACT TYPE)
NO. OF CONTACTS
- RATING:**
OPERATING VOLTAGE:50V
CURRENT RATING:0.4A
OPERATING TEMPERATURE:-55°C ~ +85°C



PCB Layout



Applicable FPC



No. of Contacts	Part Number	DIM. A	DIM. B	DIM. C	DIM. D
4	BL112-4RU	6	1.5	7.5	2.6
5	BL112-5RU	6.5	2	8	3.1
6	BL112-6RU	7	2.5	8.5	3.6
7	BL112-7RU	7.5	3	9	4.1
8	BL112-8RU	8	3.5	9.5	4.6
9	BL112-9RU	8.5	4	10	5.1
10	BL112-10RU	9	4.5	10.5	5.6
11	BL112-11RU	9.5	5	11	6.1
12	BL112-12RU	10	5.5	11.5	6.6
13	BL112-13RU	10.5	6	12	7.1
14	BL112-14RU	11	6.5	12.5	7.6
15	BL112-15RU	11.5	7	13	8.1
16	BL112-16RU	12	7.5	13.5	8.6
17	BL112-17RU	12.5	8	14	9.1
18	BL112-18RU	13	8.5	14.5	9.6
19	BL112-19RU	13.5	9	15	10.1
20	BL112-20RU	14	9.5	15.5	10.6
21	BL112-21RU	14.5	10	16	11.1
22	BL112-22RU	15	10.5	16.5	11.6
23	BL112-23RU	15.5	11	17	12.1
24	BL112-24RU	16	11.5	17.5	12.6
25	BL112-25RU	16.5	12	18	13.1
26	BL112-26RU	17	12.5	18.5	13.6
27	BL112-27RU	17.5	13	19	14.1
28	BL112-28RU	18	13.5	19.5	14.6
29	BL112-29RU	18.5	14	20	15.1
30	BL112-30RU	19	14.5	20.5	15.6
31	BL112-31RU	19.5	15	21	16.1
32	BL112-32RU	20	15.5	21.5	16.6
33	BL112-33RU	20.5	16	22	17.1
34	BL112-34RU	21	16.5	22.5	17.6
35	BL112-35RU	21.5	17	23	18.1
36	BL112-36RU	22	17.5	23.5	18.6
37	BL112-37RU	22.5	18	24	19.1
38	BL112-38RU	23	18.5	24.5	19.6
39	BL112-39RU	23.5	19	25	20.1
40	BL112-40RU	24	19.5	25.5	20.6
41	BL112-41RU	24.5	20	26	21.1
42	BL112-42RU	25	20.5	26.5	21.6
43	BL112-43RU	25.5	21	27	22.1
44	BL112-44RU	26	21.5	27.5	22.6
45	BL112-45RU	26.5	22	28	23.1
46	BL112-46RU	27	22.5	28.5	23.6
47	BL112-47RU	27.5	23	29	24.1
48	BL112-48RU	28	23.5	29.5	24.6
49	BL112-49RU	28.5	24	30	25.1
50	BL112-50RU	29	24.5	30.5	25.6

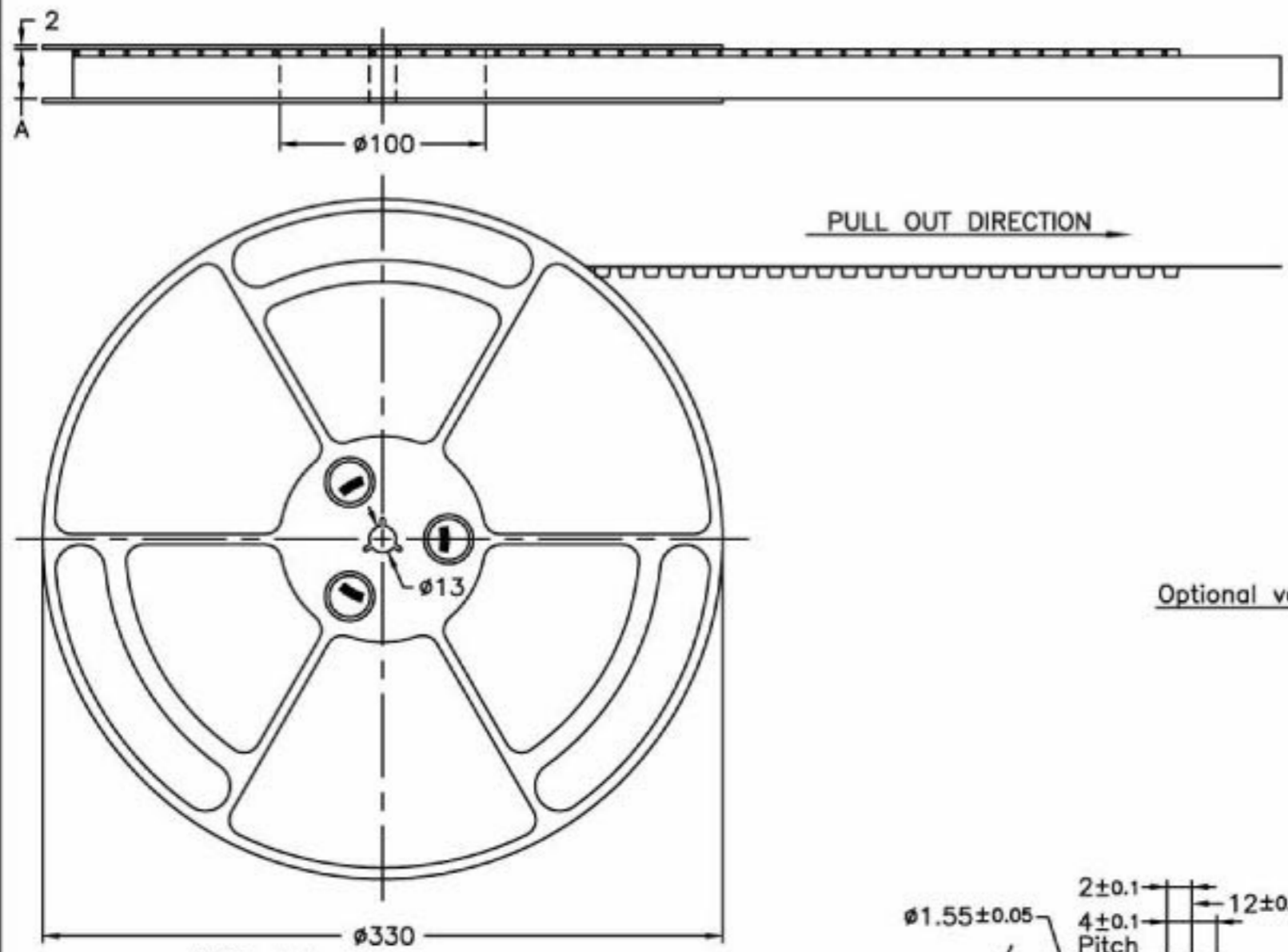
TOLERANCE UNLESS SPECIFIED		REV.	D	DR. BY	Bonnie Li	MATERIAL	See Note 1.
LINEAR	ANGLE	SHEET	2/7	CHK. BY	S.T.Lin	FINISH	See Note 2.
.X ±0.2	X' /	SCALE	8/1	APP. BY	S.T.Lin	DATE	3/2/2006
.XX ±0.15		UNIT	mm			PART NO.	See Note 3.
.XXX ±0.05							



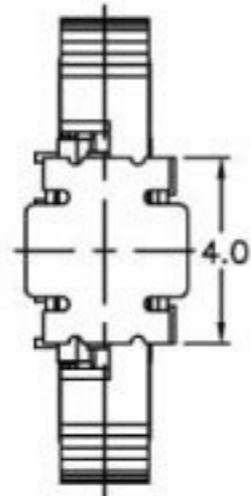
TITLE 0.5mm Pitch FPC/FFC Connector
DWG NO. D\BOOK\BOOK\BL112\HP

EMBOSSED TAPE PACKING BL112 SERIES S TYPE

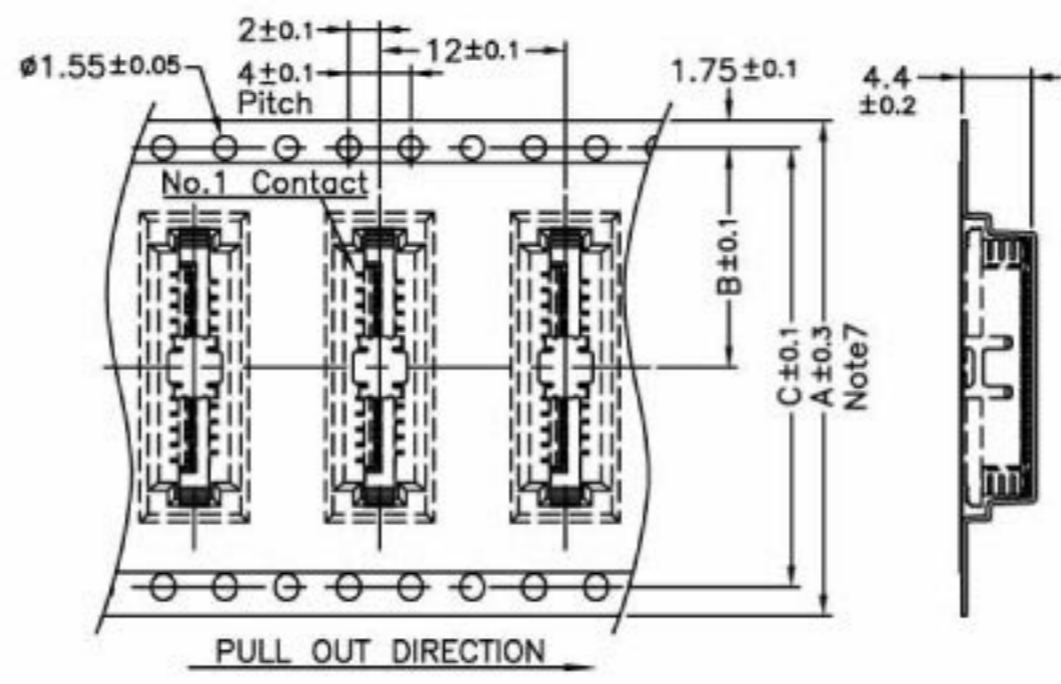
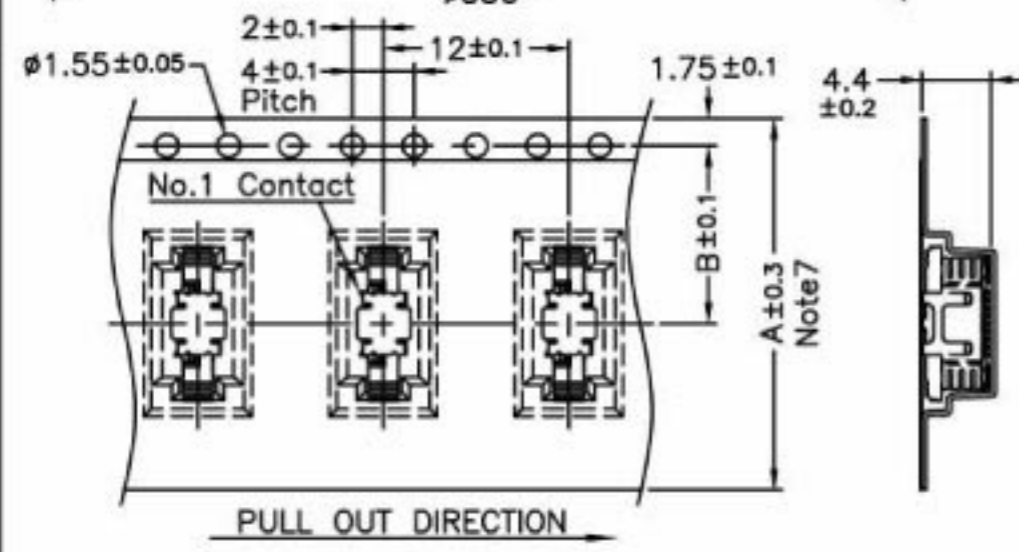
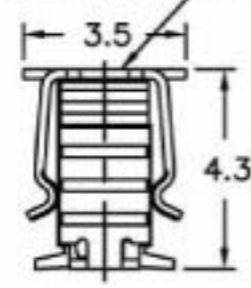
REV.	ECN NO.	DATE
A	RELEASED	10/9/2003



- Note:**
- 1.10 sprocket hole pitch cumulative tolerance ± 0.2 .
 2. Carrier camber is within 1 mm in 100mm.
 3. Material : Black Conductive Polystyrene Alloy 100% recyclable.
 4. All dimensions meet EIA-481-3 requirements.
 5. Thickness : 0.3 ± 0.05 mm
 6. Component load per 13" reel : 1000 pcs.
 7. For tape width (dimension A) 24mm a pilot hole is provided on one side.
For tape width (dimension A) 32mm and 44mm pilot holes are provided on both sides.



Optional vacuum cap for robotic placement



No. of Contacts	Part Number	DIM. A Note7	DIM. B	DIM. C
4	BL112-4S	24	11.5	—
23	BL112-23S			
24	BL112-24S	32	14.2	28.4
33	BL112-33S			
34	BL112-34S	44	20.2	40.4
50	BL112-50S			

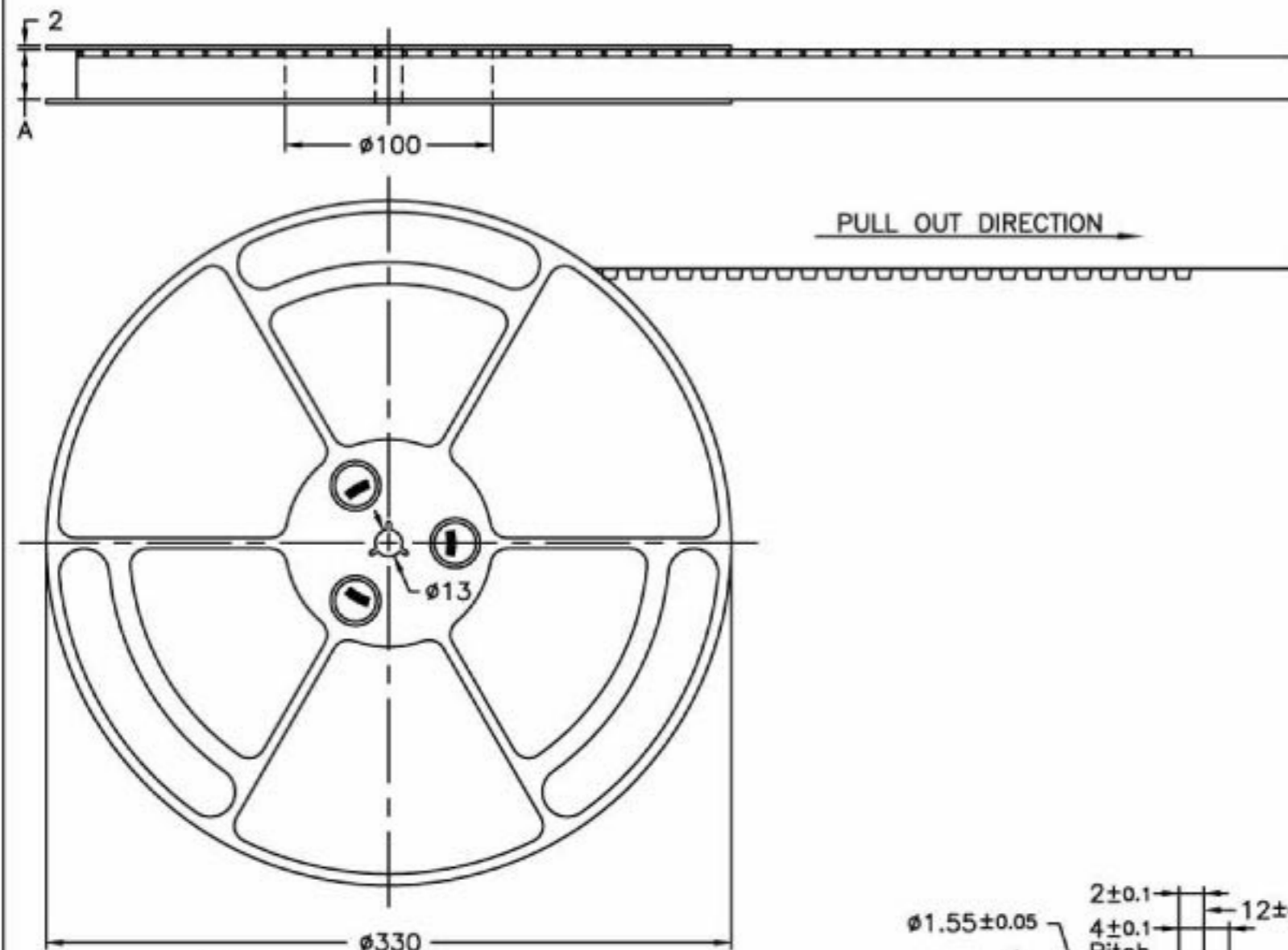
TOLERANCE UNLESS SPECIFIED		REV.	A	DR. BY	Bonnie Li	MATERIAL	See Note3
LINEAR	ANGLE	SHEET	5/7	CHK. BY	S.T.Lin	FINISH	
.XX	.X	SCALE		APP. BY	S.T.Lin	DATE	10/9/2003
.XXX		UNIT	mm			PART NO.	BL112-xxS



TITLE 0.5mm Pitch FPC/FFC Connector
 DWG NO. D:\BOOK\BOOK\BL112\HP

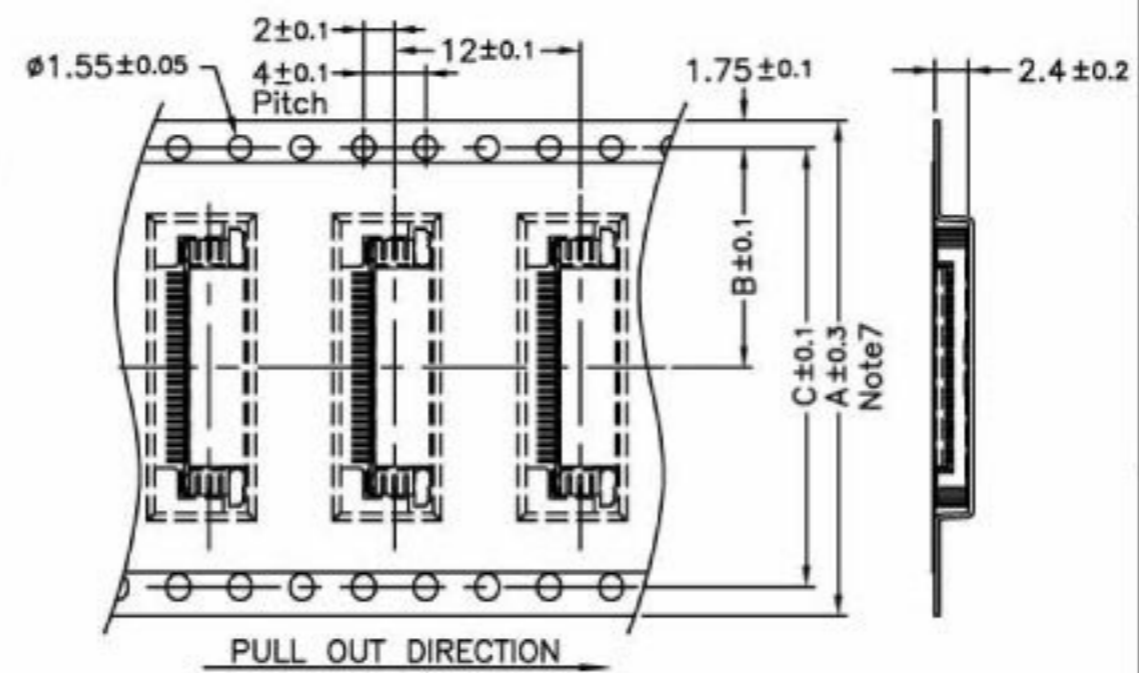
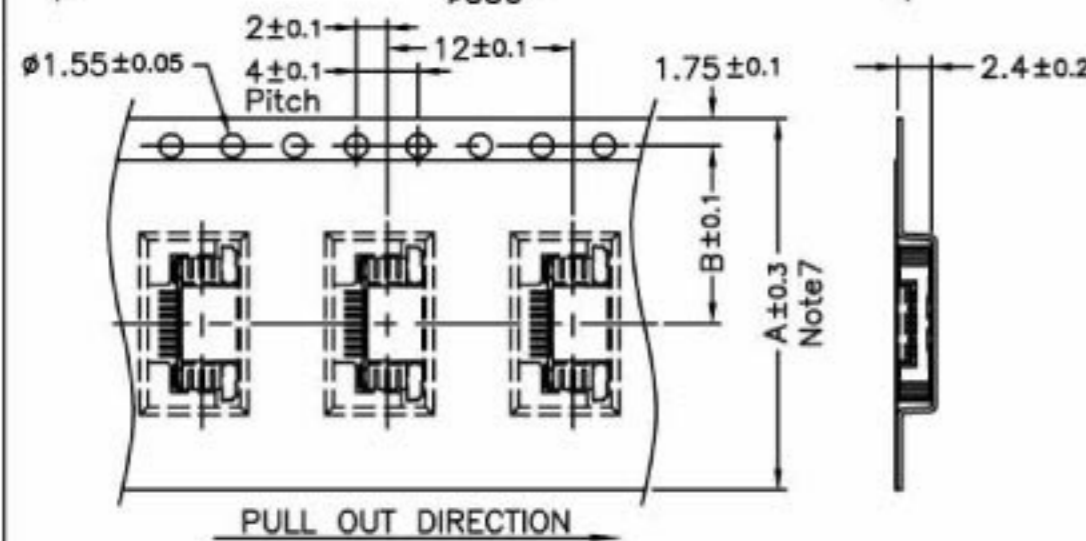
EMBOSSED TAPE PACKING BL112 SERIES RIGHT ANGLE TYPE

REV.	ECN NO.	DATE
A	RELEASED	10/9/2003



Note:

1. 10 sprocket hole pitch cumulative tolerance ± 0.2 .
2. Carrier camber is within 1 mm in 100mm.
3. Material : Black Conductive Polystyrene Alloy 100% recyclable.
4. All dimensions meet EIA-481-3 requirements.
5. Thickness : 0.3 ± 0.05 mm
6. Component load per 13" reel : 2000 pcs.
7. For tape width (dimension A) 24mm a pilot hole is provided on one side.
For tape width (dimension A) 32mm and 44mm pilot holes are provided on both sides.



No. of Contacts	Part Number	DIM. A Note7	DIM. B	DIM. C
4	BL112-4RU BL112-4RL	24	11.5	—
23	BL112-23RU BL112-23RL			
24	BL112-24RU BL112-24RL	32	14.2	28.4
33	BL112-33RU BL112-33RL			
34	BL112-34RU BL112-34RL	44	20.2	40.4
50	BL112-50RU BL112-50RL			

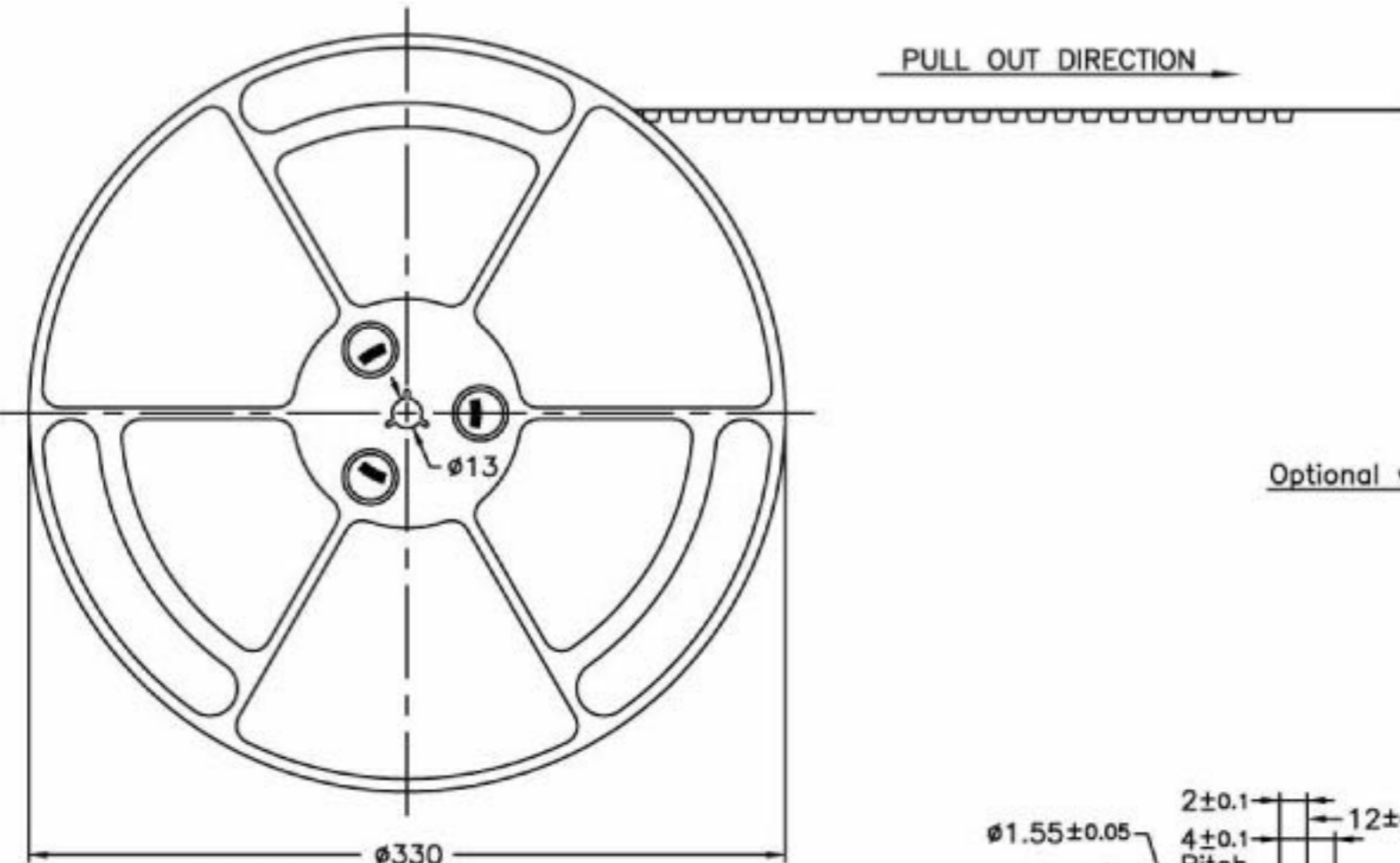
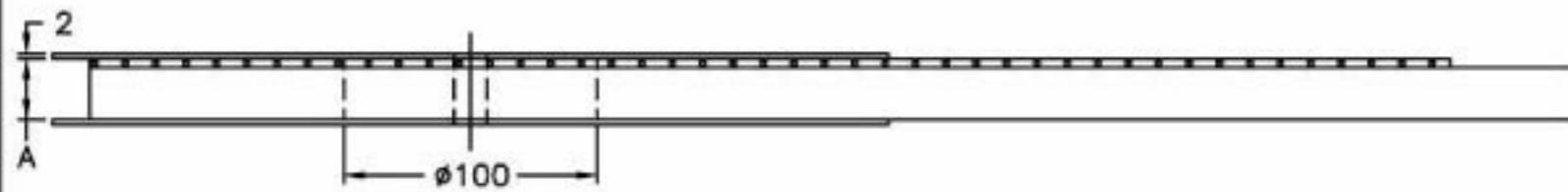
TOLERANCE UNLESS SPECIFIED		REV.	A	DR. BY	Bonnie Li	MATERIAL	See Note3
LINEAR	ANGLE	SHEET	6/7	CHK. BY	S.T.Lin	FINISH	
.XX	.X	SCALE		APP. BY	S.T.Lin	DATE	10/9/2003
.XXX		UNIT	mm			PART NO.	BL112-xxRU&RL



TITLE 0.5mm Pitch FPC/FFC Connector
 DWG NO. D:\BOOK\BOOK\BL112\HP

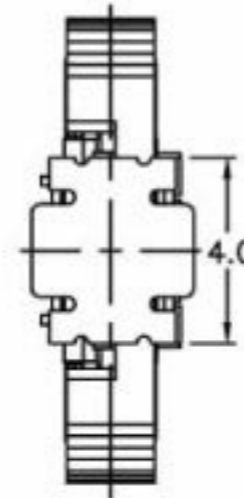
EMBOSSED TAPE PACKING BL112 SERIES SX TYPE

REV.	ECN NO.	DATE
A	RELEASED	10/9/2003

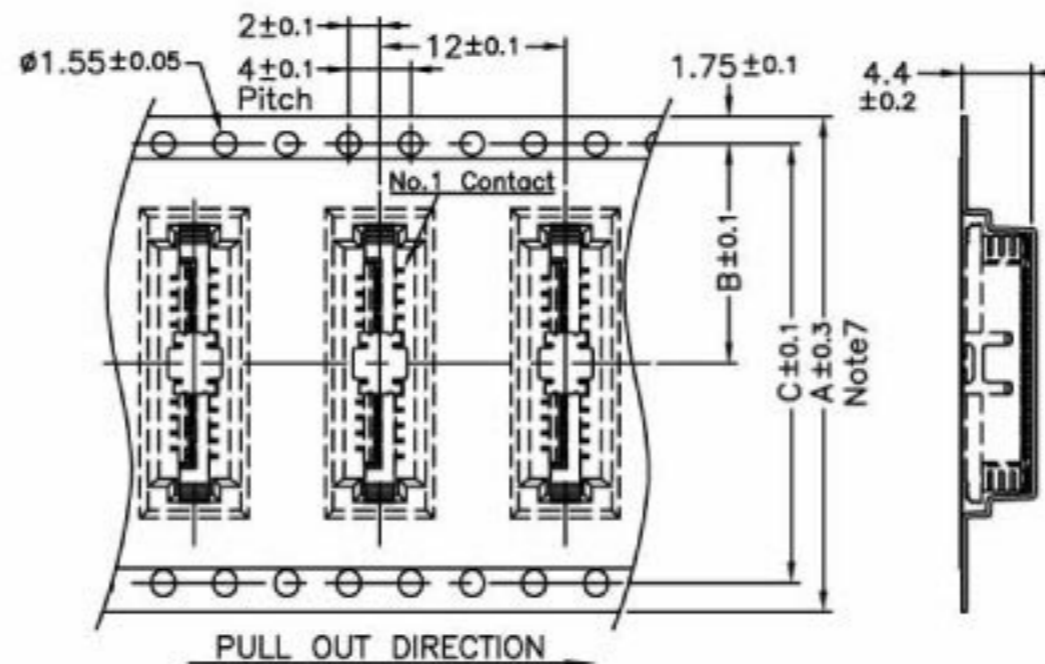
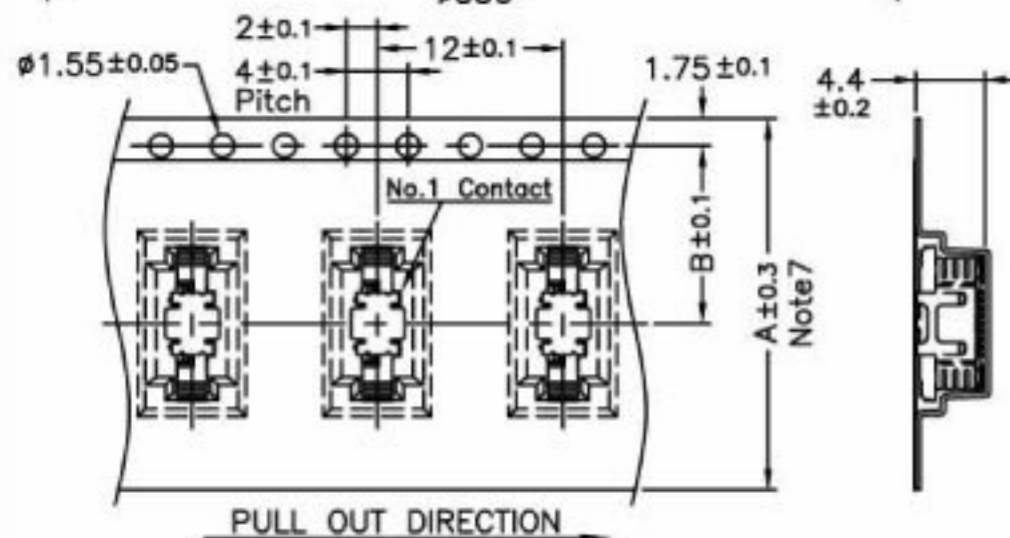
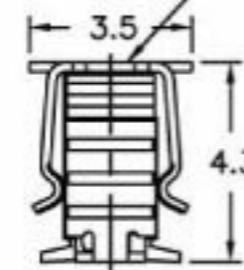


Note:

- 1.10 sprocket hole pitch cumulative tolerance ± 0.2 .
2. Carrier camber is within 1 mm in 100mm.
3. Material : Black Conductive Polystyrene Alloy 100% recyclable.
4. All dimensions meet EIA-481-3 requirements.
5. Thickness : 0.3 ± 0.05 mm
6. Component load per 13" reel : 1000 pcs.
7. For tape width (dimension A) 24mm a pilot hole is provided on one side.
For tape width (dimension A) 32mm and 44mm pilot holes are provided on both sides.



Optional vacuum cap for robotic placement



No. of Contacts	Part Number	DIM. A Note 7	DIM. B	DIM. C
4	BL112-4SX	24	11.5	—
23	BL112-23SX			
24	BL112-24SX	32	14.2	28.4
33	BL112-33SX			
34	BL112-34SX	44	20.2	40.4
50	BL112-50SX			

TOLERANCE UNLESS SPECIFIED		REV.	A	DR. BY	Bonnie Li	MATERIAL	See Note 3
LINEAR	ANGLE	SHEET	7/7	CHK. BY	S.T.Lin	FINISH	
.XX	.X	SCALE		APP. BY	S.T.Lin	DATE	10/9/2003
.XXX		UNIT	mm			PART NO.	BL112-xxSX



TITLE 0.5mm Pitch FPC/FFC Connector
 DWG NO. D:\BOOK\BOOK\BL112\HP