

REV.	ECN NO.	DATE
A	RELEASED	8/5/'98
B	904006	4/15/'99
C	001001	1/4/2001
D	110015	10/15/'01
E	405004	05/26/'04
F	411008	11/04/'04
G	412001	12/31/'04

NOTE:

1.MATERIAL:

HOUSING:THERMOPLASTIC
 SLIDER:THERMOPLASTIC
 CONTACTS:COPPER ALLOY
 SOLDER PAD:COPPER ALLOY

2.PLATING:

CONTACTS:SEE ORDERING INFORMATION
 SOLDER PAD:SEE ORDERING INFORMATION

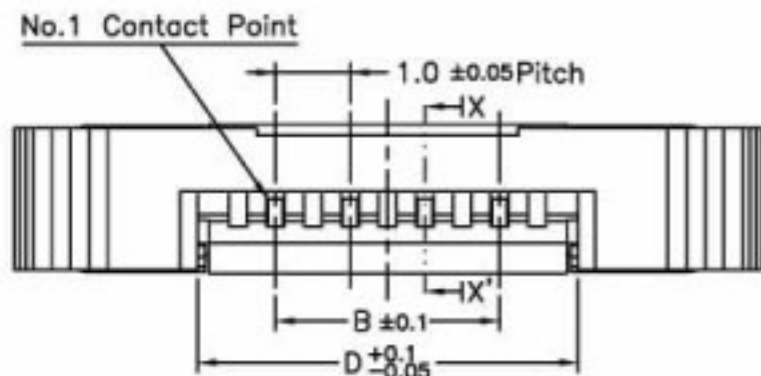
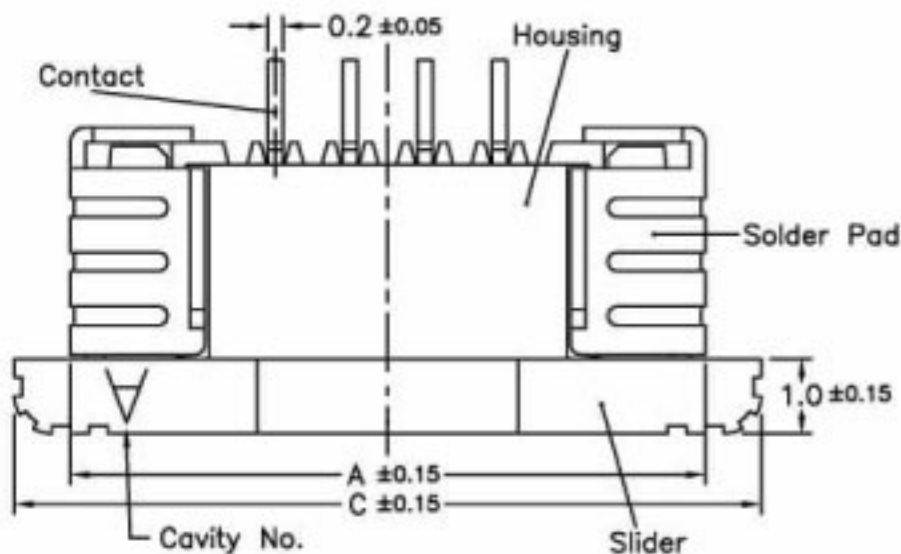
3.PART NO.:

BL113- xx RL- xx xx

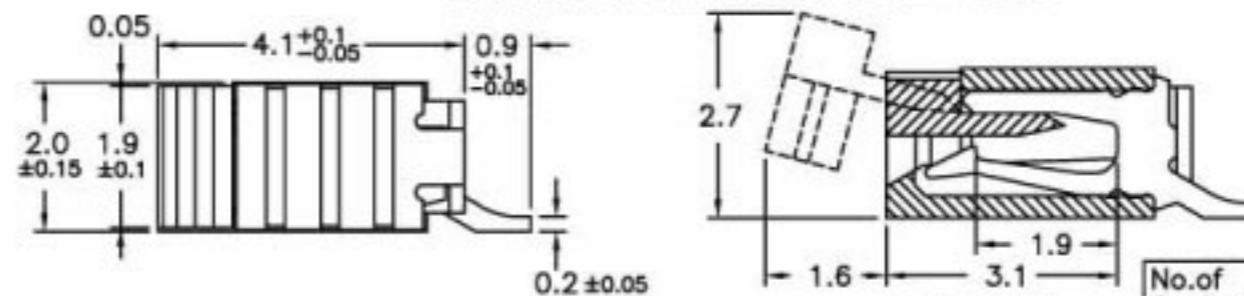
00-TIN/LEAD OVER NICKEL
 ND-TIN OVER NICKEL(LEAD FREE)
 1G-1U" GOLD OVER NICKEL
 3G-3U" GOLD OVER NICKEL
 PACKAGING
 TA-EMBOSSED TAPE
 TU-TUBE
 RIGHT ANGLE/LOWER CONTACT TYPE
 NO. OF CONTACTS

4.RATING:

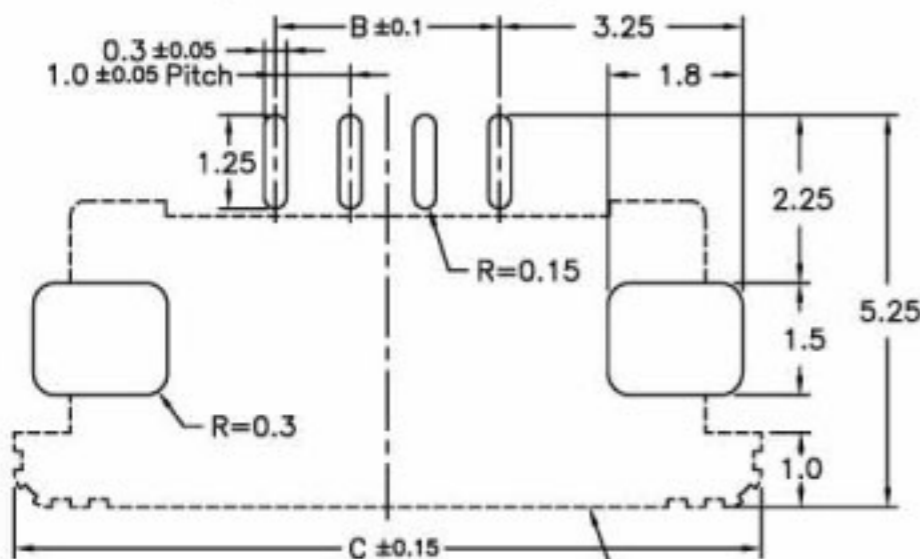
OPERATING VOLTAGE:50V
 CURRENT RATING:0.5A
 OPERATING TEMPERATURE:-55°C ~ +85°C



PCB Layout



Applicable FPC



FPC/FFC INSERT DIRECTION

No.of Contacts	Part Number	DIM. A	DIM. B	DIM. C	DIM. D
4	BL113-04RL	8.5	3	10	5.1
5	BL113-05RL	9.5	4	11	6.1
6	BL113-06RL	10.5	5	12	7.1
7	BL113-07RL	11.5	6	13	8.1
8	BL113-08RL	12.5	7	14	9.1
9	BL113-09RL	13.5	8	15	10.1
10	BL113-10RL	14.5	9	16	11.1
11	BL113-11RL	15.5	10	17	12.1
12	BL113-12RL	16.5	11	18	13.1
13	BL113-13RL	17.5	12	19	14.1
14	BL113-14RL	18.5	13	20	15.1
15	BL113-15RL	19.5	14	21	16.1
16	BL113-16RL	20.5	15	22	17.1
17	BL113-17RL	21.5	16	23	18.1
18	BL113-18RL	22.5	17	24	19.1
19	BL113-19RL	23.5	18	25	20.1
20	BL113-20RL	24.5	19	26	21.1
21	BL113-21RL	25.5	20	27	22.1
22	BL113-22RL	26.5	21	28	23.1
23	BL113-23RL	27.5	22	29	24.1
24	BL113-24RL	28.5	23	30	25.1

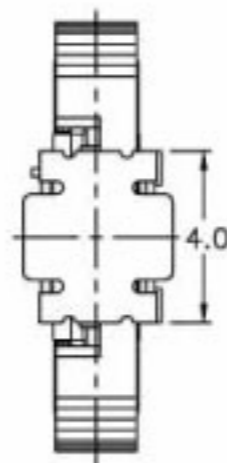
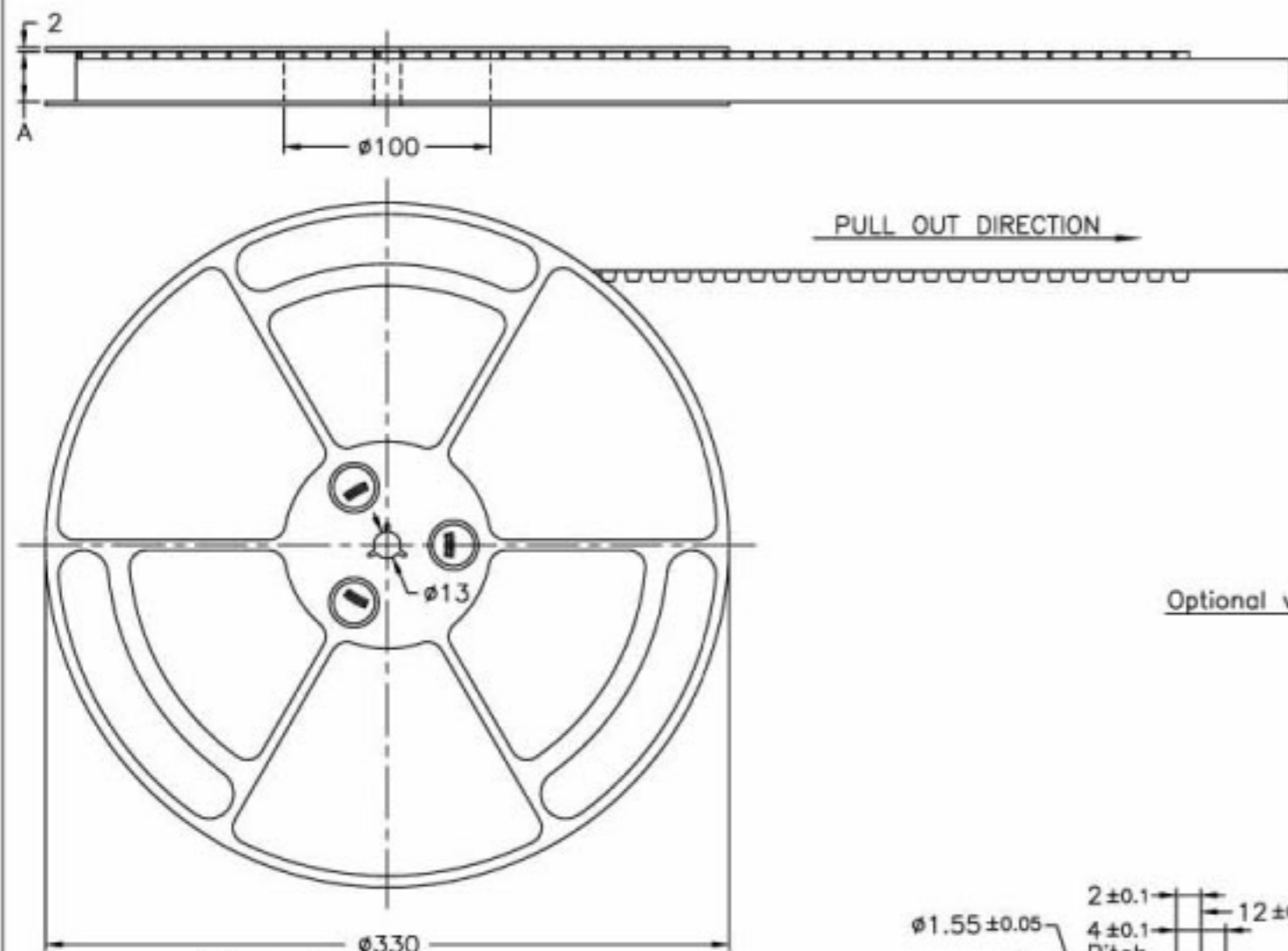
TOLERANCE UNLESS SPECIFIED		REV.	G	DR. BY	Bonnie Li	MATERIAL	See Note 1.
LINEAR	ANGLE	SHEET	1/7	CHK. BY	S.T.Lin	FINISH	See Note 2.
X	X	SCALE	B/1	APP. BY	S.T.Lin	DATE	05/26/'04
JXX		UNIT	mm			PART NO.	See Note 3.



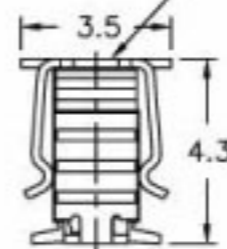
TITLE 1.0mm Pitch FPC/FFC Connector
 DWG NO. C1/CADBOOK/BOOK/BL113/HP

EMBOSSED TAPE PACKING BL113 SERIES S TYPE

REV.	ECN NO.	DATE
A	RELEASED	2/22/2000
B	101003	1/10/2001
C	110015	10/15/'01
D	411008	11/04/'04

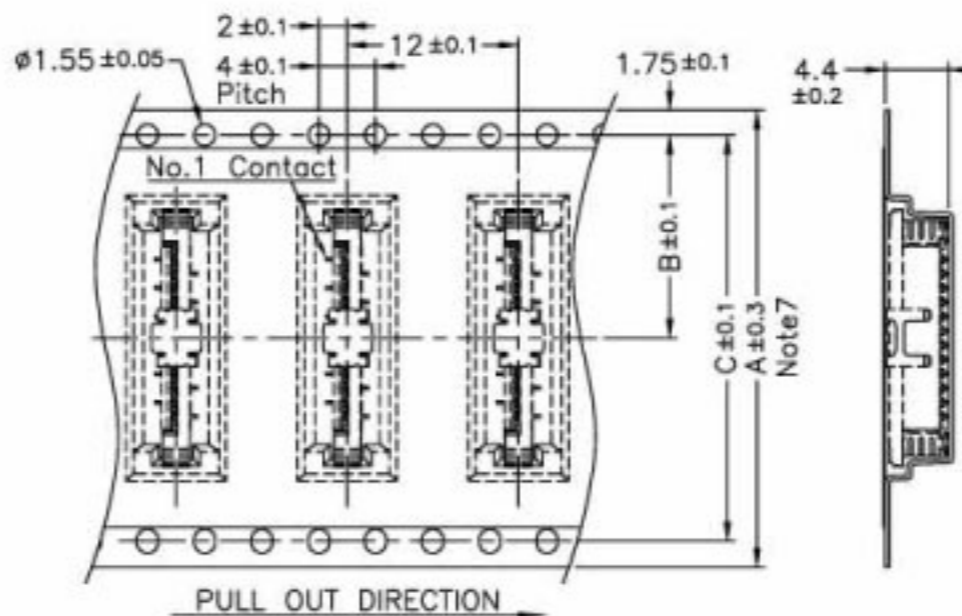
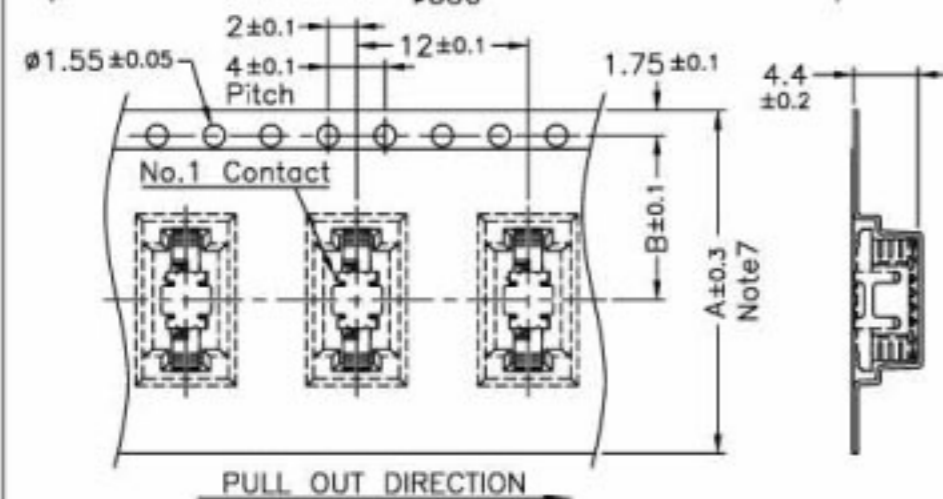


Optional vacuum cap for robotic placement



Note:

1. 10 sprocket hole pitch cumulative tolerance ± 0.2
2. Carrier camber is within 1 mm in 100mm.
3. Material : Black Conductive Polystyrene Alloy
100% recyclable.
4. All dimensions meet EIA-481-B requirements.
5. Thickness : 0.3 ± 0.05 mm
6. Component load per 13" reel : 1000 pcs.
7. For tape width (dimension A) 24mm a pilot hole is provided on one side.
For tape width (dimension A) 32mm and 44mm pilot holes are provided on both sides.



No. of Contacts	Part Number	DIM. A Note7	DIM. B	DIM. C
4	BL113-04S	24	11.5	—
11	BL113-11S			
12	BL113-12S	32	14.2	28.4
16	BL113-16S			
17	BL113-17S			
24	BL113-24S	44	20.2	40.4

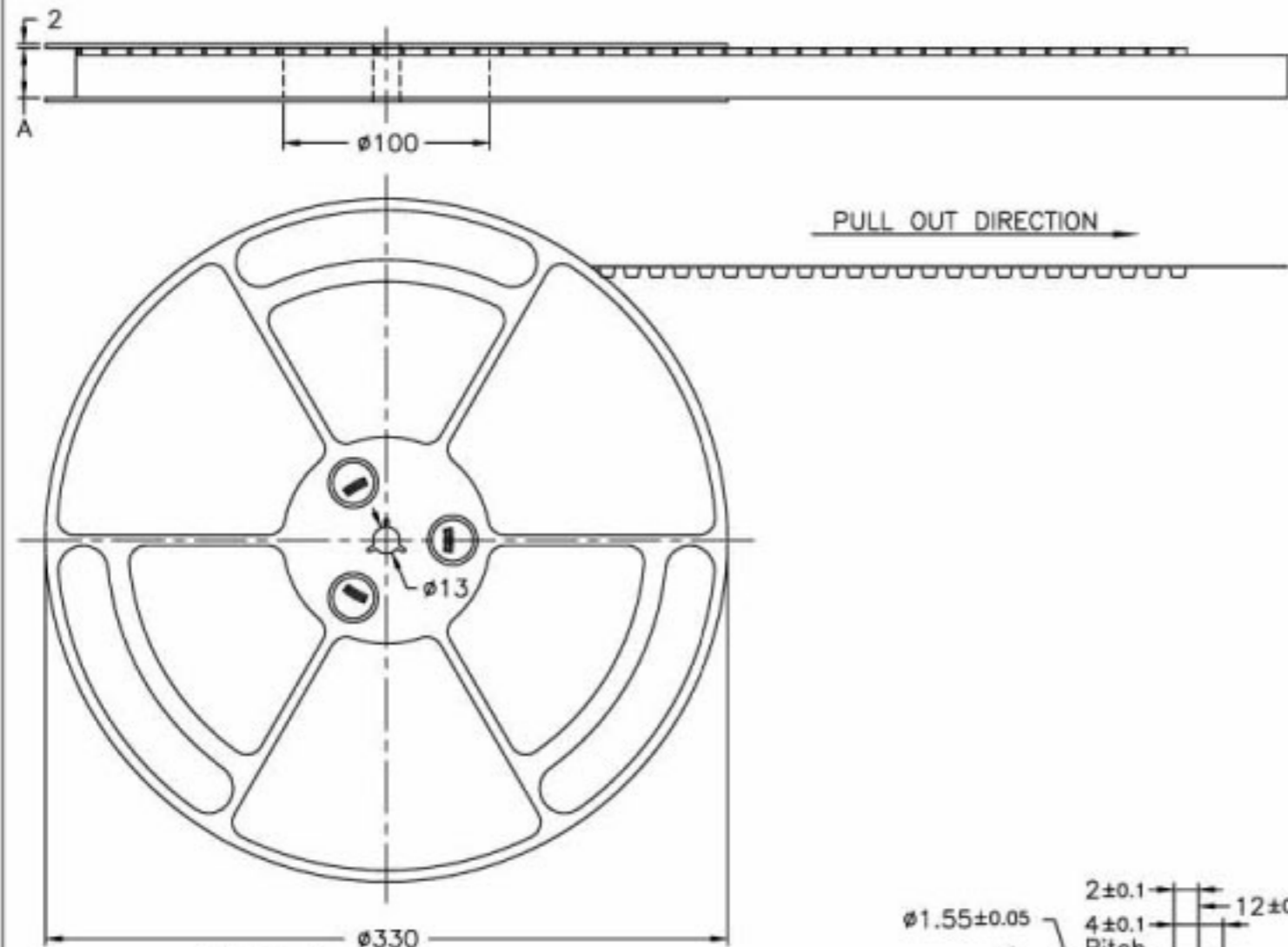
TOLERANCE UNLESS SPECIFIED		REV.	D	DR. BY	Bonnie Li	MATERIAL	See Note3
LINEAR	ANGLE	SHEET	5/7	CHK. BY	S.T.Lin	FINISH	
.X	.X'	SCALE		APP. BY	S.T.Lin	DATE	10/15/'01
.XX		UNIT	mm			PART NO.	BL113-xxS
.XXX							



TITLE 1.0mm Pitch FPC/FFC Connector
DWG NO. C1/CADBOOK/BOOK/BL113/HP

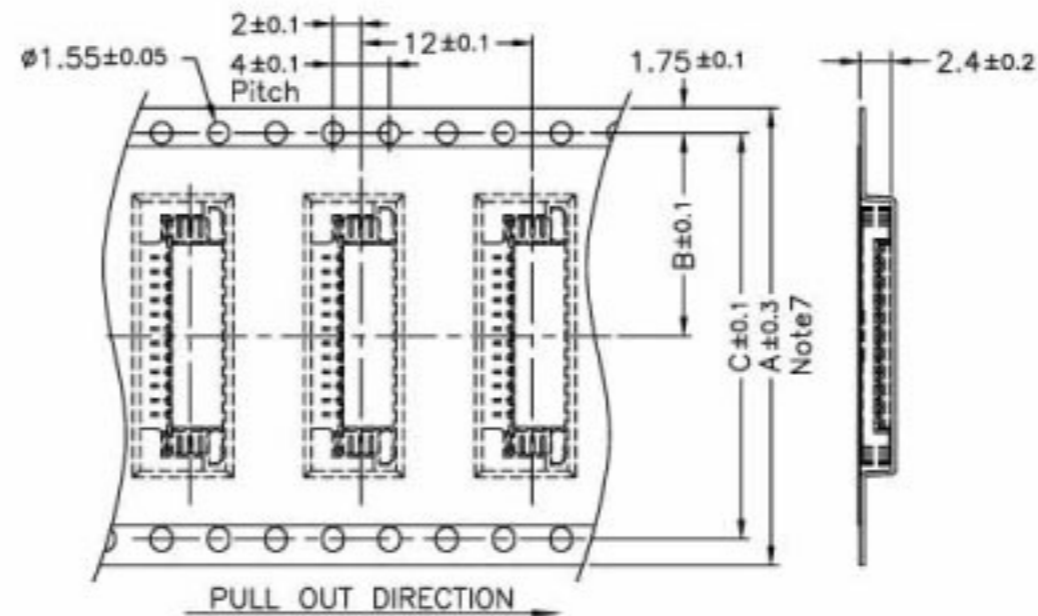
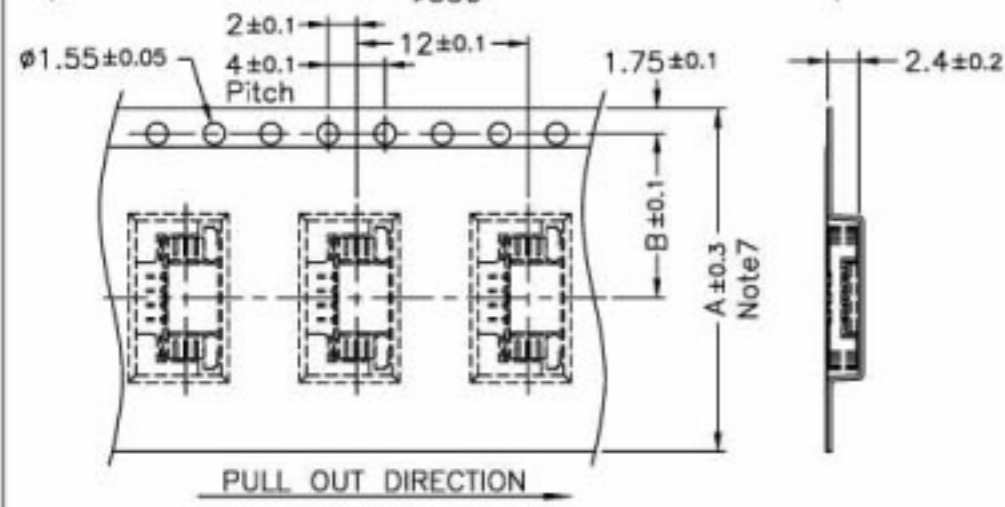
EMBOSSED TAPE PACKING BL113 SERIES RIGHT ANGLE TYPE

REV.	ECN NO.	DATE
A	RELEASED	2/22/2000
B	110015	10/15/'01
C	411008	11/04/'04



Note:

1. 10 sprocket hole pitch cumulative tolerance ± 0.2
2. Carrier camber is within 1 mm in 100mm.
3. Material : Black Conductive Polystyrene Alloy
100% recyclable.
4. All dimensions meet EIA-481-B requirements.
5. Thickness : 0.3 ± 0.05 mm
6. Component load per 13" reel : 2000 pcs.
7. For tape width (dimension A) 24mm a pilot hole is provided on one side.
For tape width (dimension A) 32mm and 44mm pilot holes are provided on both sides.



No. of Contacts	Part Number	DIM. A Note 7	DIM. B	DIM. C
4	BL113-04RU BL113-04RL	24	11.5	—
11	BL113-11RU BL113-11RL			
12	BL113-12RU BL113-12RL	32	14.2	28.4
16	BL113-16RU BL113-16RL			
17	BL113-17RU BL113-17RL			
24	BL113-24RU BL113-24RL	44	20.2	40.4

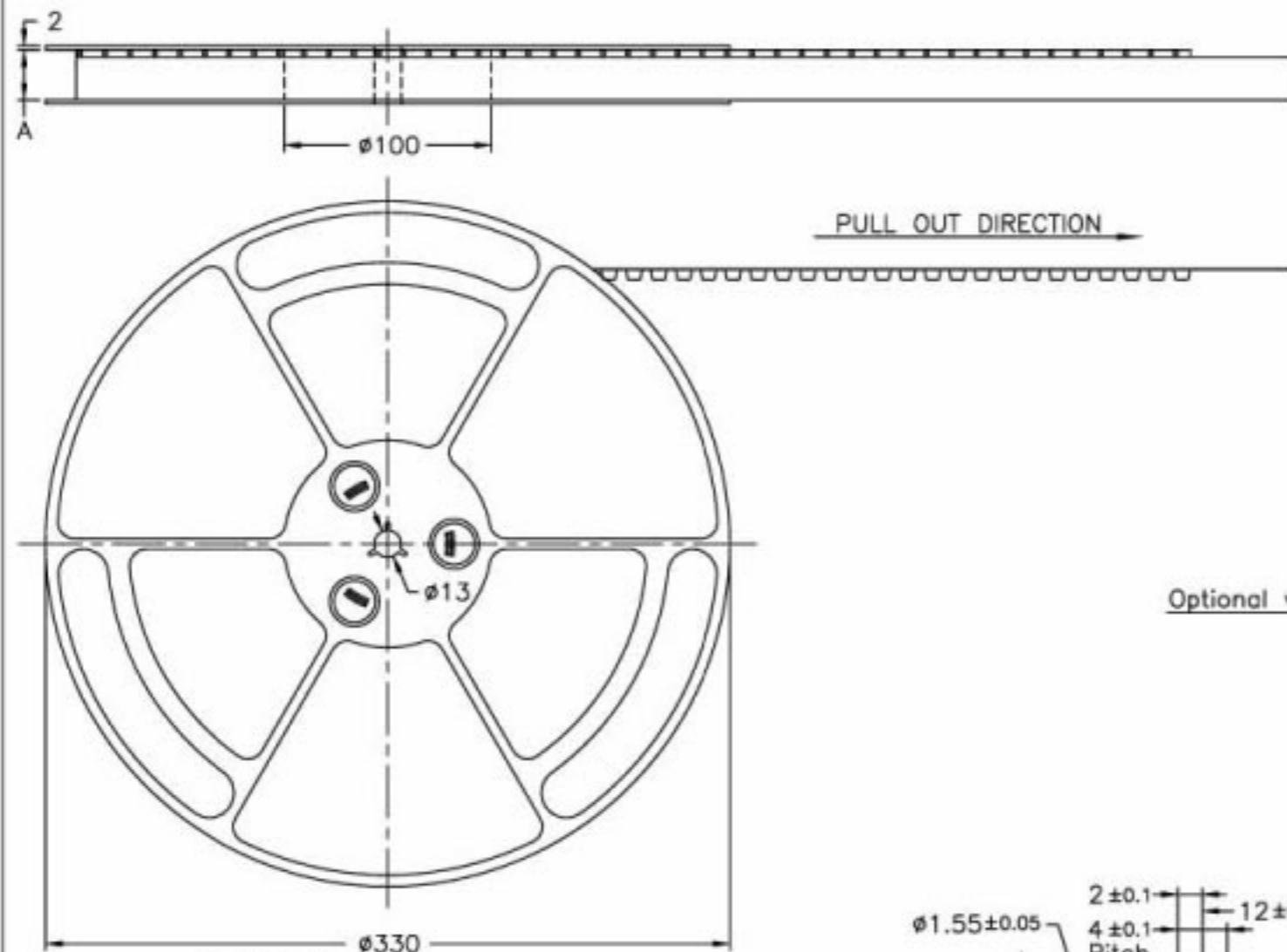
TOLERANCE UNLESS SPECIFIED		REV.	C	DR. BY	Bonnie Li	MATERIAL	See Note 3
LINEAR	ANGLE	SHEET	6/7	CHK. BY	S.T.Lin	FINISH	
.X	.X'	SCALE		APP. BY	S.T.Lin	DATE	10/15/'01
.XX		UNIT	mm			PART NO.	BL113-xxRU&RL
.XXX							



TITLE 1.0mm Pitch FPC/FFC Connector
 DWG NO. C1/CADBOOK/BOOK/BL113/HP

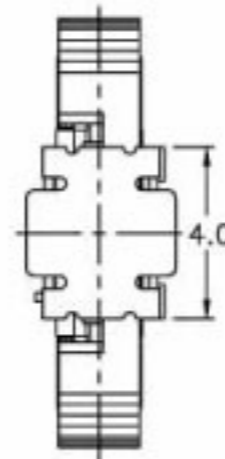
EMBOSSED TAPE PACKING BL113 SERIES SX TYPE

REV.	ECN NO.	DATE
A	RELEASED	2/22/2000
B	101003	1/10/2001
C	110015	10/15/'01
D	411008	11/04/'04

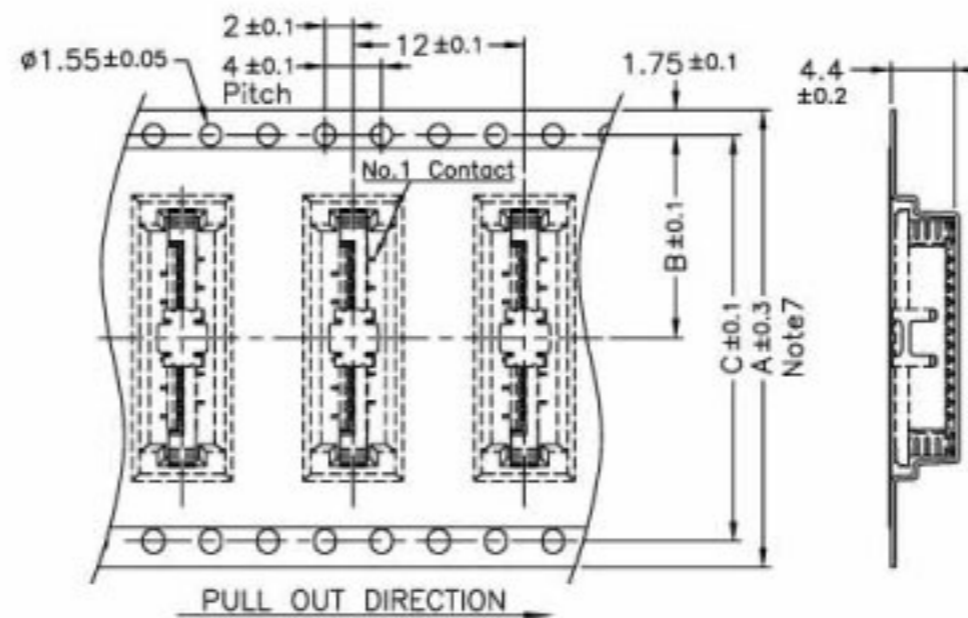
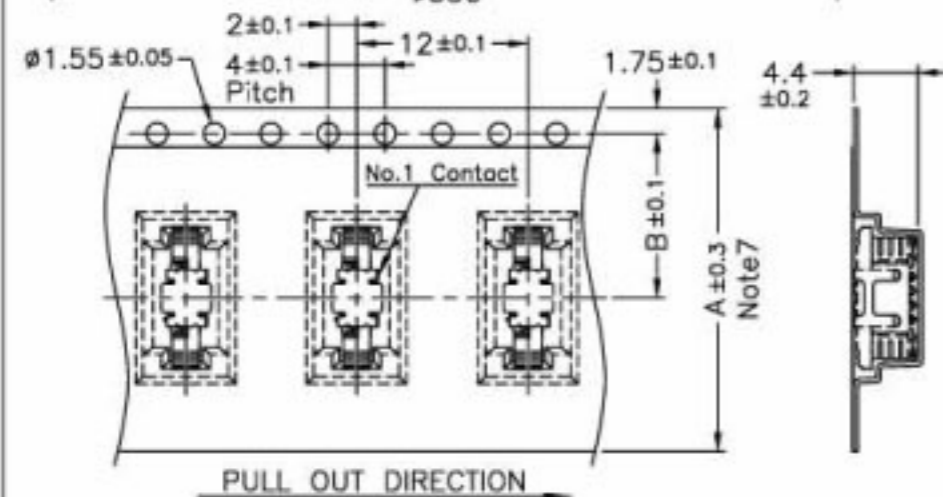
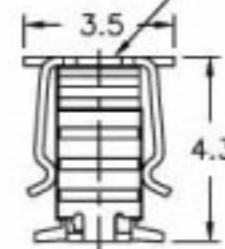


Note:

1. 10 sprocket hole pitch cumulative tolerance ± 0.2
2. Carrier camber is within 1 mm in 100mm.
3. Material : Black Conductive Polystyrene Alloy
100% recyclable.
4. All dimensions meet EIA-481-B requirements.
5. Thickness : 0.3 ± 0.05 mm
6. Component load per 13" reel : 1000 pcs.
7. For tape width (dimension A) 24mm a pilot hole is provided on one side.
For tape width (dimension A) 32mm and 44mm pilot holes are provided on both sides.



Optional vacuum cap for robotic placement



No. of Contacts	Part Number	DIM. A Note 7	DIM. B	DIM. C
4	BL113-4SX	24	11.5	—
11	BL113-11SX			
12	BL113-12SX	32	14.2	28.4
16	BL113-16SX			
17	BL113-17SX			
24	BL113-24SX	44	20.2	40.4

TOLERANCE UNLESS SPECIFIED		REV.	D	DR. BY	MATERIAL
LINEAR	ANGLE			Bonnie Li	See Note 3
.X	.X'	SHEET	7/7	CHK. BY	FINISH
.XX	.X'	SCALE		S.T.Lin	DATE 10/15/'01
.XXX		UNIT	mm	APP. BY	PART NO. BL113-xxSX



TITLE 1.0mm Pitch FPC/FFC Connector
DWG NO. C1/CADBOOK/BOOK/BL113/HP