

REV.	ECN NO.	DATE
A	RELEASED	5/3/'97
B	708008	8/5/'97
C	801045	10/20/'98
D	110025	10/25/'01

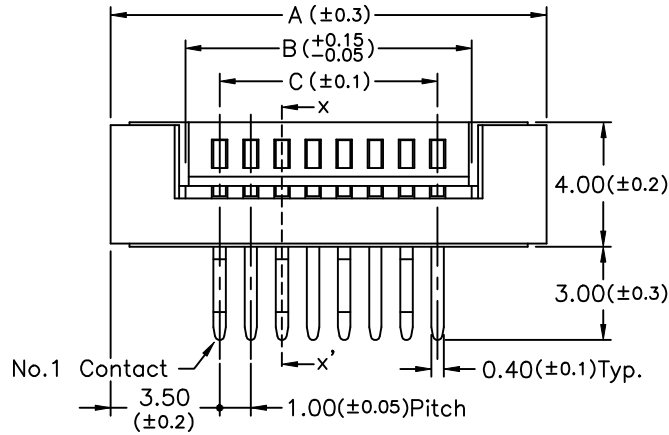
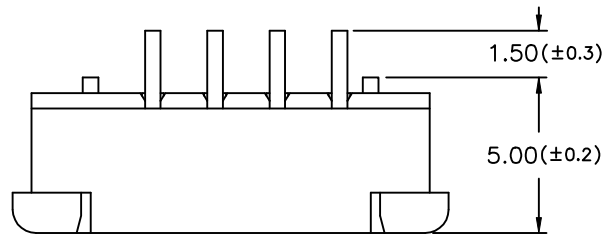
NOTE:

- 1.MATERIAL:
INSULATOR:THERMOPLASTIC
CONTACTS:PHOSPHOR BRONZE
- 2.CONTACTS FINISH:TIN OVER NICKEL
- 3.PART NO.:

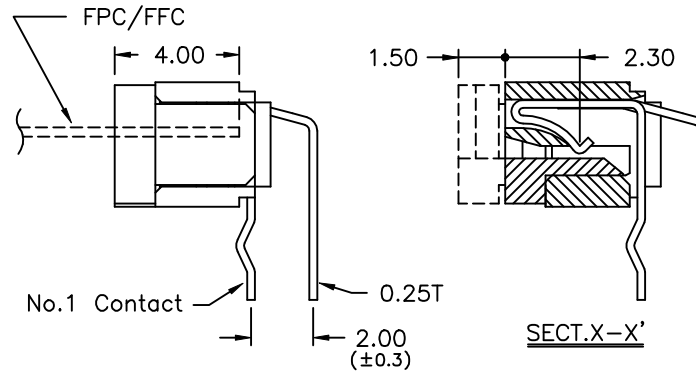
BL106- xx RU

RIGHT ANGLE(UPPER CONTACT TYPE)
NO. OF CONTACTS
SERIES

- 4.CURRENT RATING:0.5A MAX.
- 5.VOLTAGE RATING:50V MAX.
- 6.DIELECTRIC WITHSTANDING VOLTAGE:500Vrms.

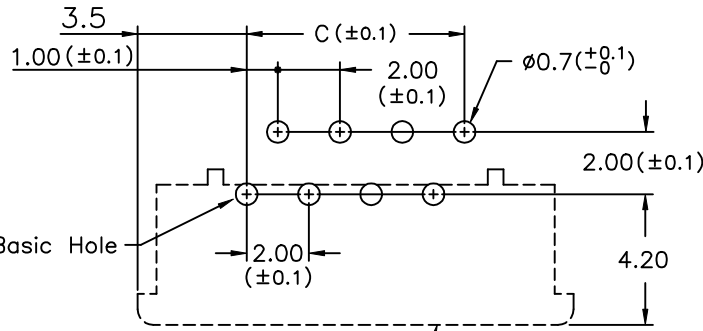


PCB Layout

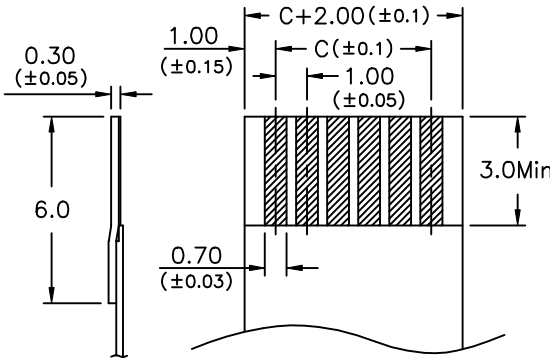


Applicable FPC

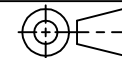
No.of Contacts	Catalog Number	Dimensions		
		A	B	C
4	BL106-4RU	10.00	5.20	3.00
5	BL106-5RU	11.00	6.20	4.00
6	BL106-6RU	12.00	7.20	5.00
7	BL106-7RU	13.00	8.20	6.00
8	BL106-8RU	14.00	9.20	7.00
9	BL106-9RU	15.00	10.20	8.00
10	BL106-10RU	16.00	11.20	9.00
11	BL106-11RU	17.00	12.20	10.00
12	BL106-12RU	18.00	13.20	11.00
13	BL106-13RU	19.00	14.20	12.00
14	BL106-14RU	20.00	15.20	13.00
15	BL106-15RU	21.00	16.20	14.00
16	BL106-16RU	22.00	17.20	15.00
17	BL106-17RU	23.00	18.20	16.00
18	BL106-18RU	24.00	19.20	17.00
19	BL106-19RU	25.00	20.20	18.00
20	BL106-20RU	26.00	21.20	19.00
21	BL106-21RU	27.00	22.20	20.00
22	BL106-22RU	28.00	23.20	21.00
23	BL106-23RU	29.00	24.20	22.00
24	BL106-24RU	30.00	25.20	23.00
25	BL106-25RU	31.00	26.20	24.00
26	BL106-26RU	32.00	27.20	25.00
27	BL106-27RU	33.00	28.20	26.00
28	BL106-28RU	34.00	29.20	27.00
29	BL106-29RU	35.00	30.20	28.00
30	BL106-30RU	36.00	31.20	29.00
31	BL106-31RU	37.00	32.20	30.00
32	BL106-32RU	38.00	33.20	31.00



FPC/FFC INSERT DIRECTION



TOLERANCE UNLESS SPECIFIED		REV.	D	DR. BY	MATERIAL
LINEAR	ANGLE	SHEET	2/4	CHK. BY	See Note 1.
.X ±0.2	X	SCALE	4/1	APP. BY	FINISH See Note 2.
.XX ±0.15	.X	UNIT	mm		DATE 10/25/'01
.XXX ±0.05					PART NO. See Note 3.



TITLE 1.0mm Pitch FPC/FFC Connector
DWG NO. D/BOOK/BOOK/BL106/HP