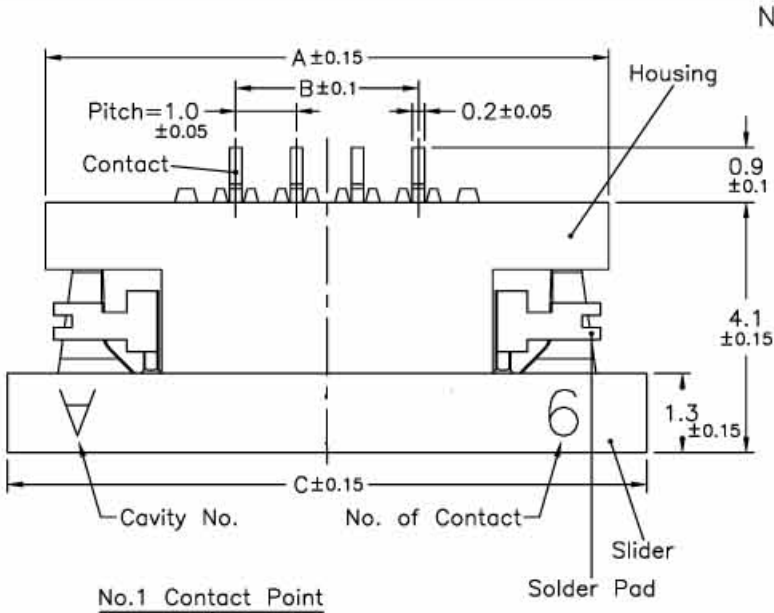


| REV. | ECN NO. | DATE |
|------|----------|------------|
| A | RELEASED | 9/4/2001 |
| B | 410001 | 10/19/2004 |
| | | |



NOTE:

1. MATERIAL:
HOUSING: THERMOPLASTIC
SLIDER: THERMOPLASTIC
CONTACTS: COPPER ALLOY
SOLDER PAD: COPPER ALLOY

2. PLATING:
CONTACTS: SEE ORDERING INFORMATION
SOLDER PAD: SEE ORDERING INFORMATION

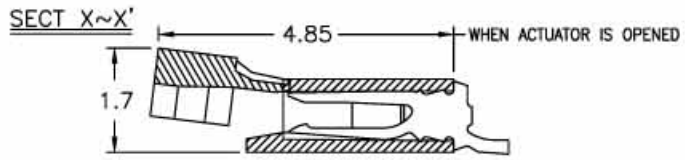
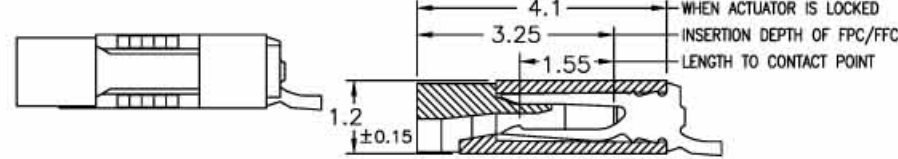
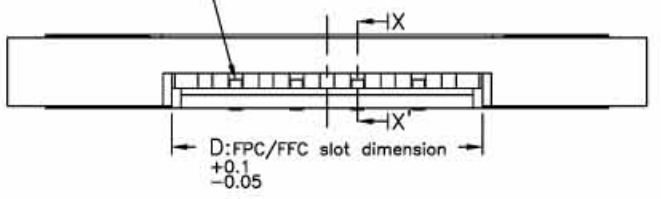
3. PART NO.:
BL117-xx RL-xx xx

OO-TIN/LEAD OVER NICKEL
ND-TIN OVER NICKEL (LEAD FREE)
1G-1U" GOLD OVER NICKEL
3G-3U" GOLD OVER NICKEL

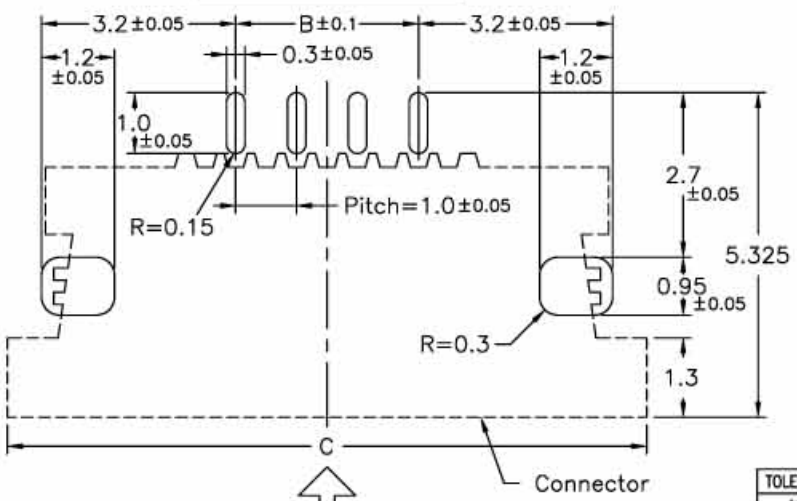
PACKAGING
TA-EMBOSSED TAPE
TU-TUBE

RIGHT ANGLE (LOWER CONTACT TYPE)
NO. OF CONTACTS

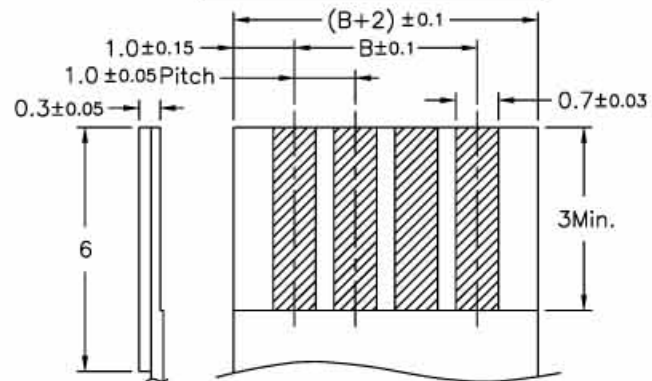
4. RATING:
OPERATING VOLTAGE: 50V
CURRENT RATING: 0.5A
OPERATING TEMPERATURE: -55°C ~ +85°C



PCB Layout

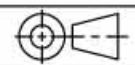


Applicable FPC



| No. of Contacts | Part Number | DIM. A | DIM. B | DIM. C | DIM. D |
|-----------------|-------------|--------|--------|--------|--------|
| 4 | BL117-04RL | 9.25 | 3 | 10.5 | 5.1 |
| 5 | BL117-05RL | 10.25 | 4 | 11.5 | 6.1 |
| 6 | BL117-06RL | 11.25 | 5 | 12.5 | 7.1 |
| 7 | BL117-07RL | 12.25 | 6 | 13.5 | 8.1 |
| 8 | BL117-08RL | 13.25 | 7 | 14.5 | 9.1 |
| 9 | BL117-09RL | 14.25 | 8 | 15.5 | 10.1 |
| 10 | BL117-10RL | 15.25 | 9 | 16.5 | 11.1 |
| 11 | BL117-11RL | 16.25 | 10 | 17.5 | 12.1 |
| 12 | BL117-12RL | 17.25 | 11 | 18.5 | 13.1 |
| 13 | BL117-13RL | 18.25 | 12 | 19.5 | 14.1 |
| 14 | BL117-14RL | 19.25 | 13 | 20.5 | 15.1 |
| 15 | BL117-15RL | 20.25 | 14 | 21.5 | 16.1 |
| 16 | BL117-16RL | 21.25 | 15 | 22.5 | 17.1 |
| 17 | BL117-17RL | 22.25 | 16 | 23.5 | 18.1 |
| 18 | BL117-18RL | 23.25 | 17 | 24.5 | 19.1 |
| 19 | BL117-19RL | 24.25 | 18 | 25.5 | 20.1 |
| 20 | BL117-20RL | 25.25 | 19 | 26.5 | 21.1 |
| 21 | BL117-21RL | 26.25 | 20 | 27.5 | 22.1 |
| 22 | BL117-22RL | 27.25 | 21 | 28.5 | 23.1 |
| 23 | BL117-23RL | 28.25 | 22 | 29.5 | 24.1 |
| 24 | BL117-24RL | 29.25 | 23 | 30.5 | 25.1 |

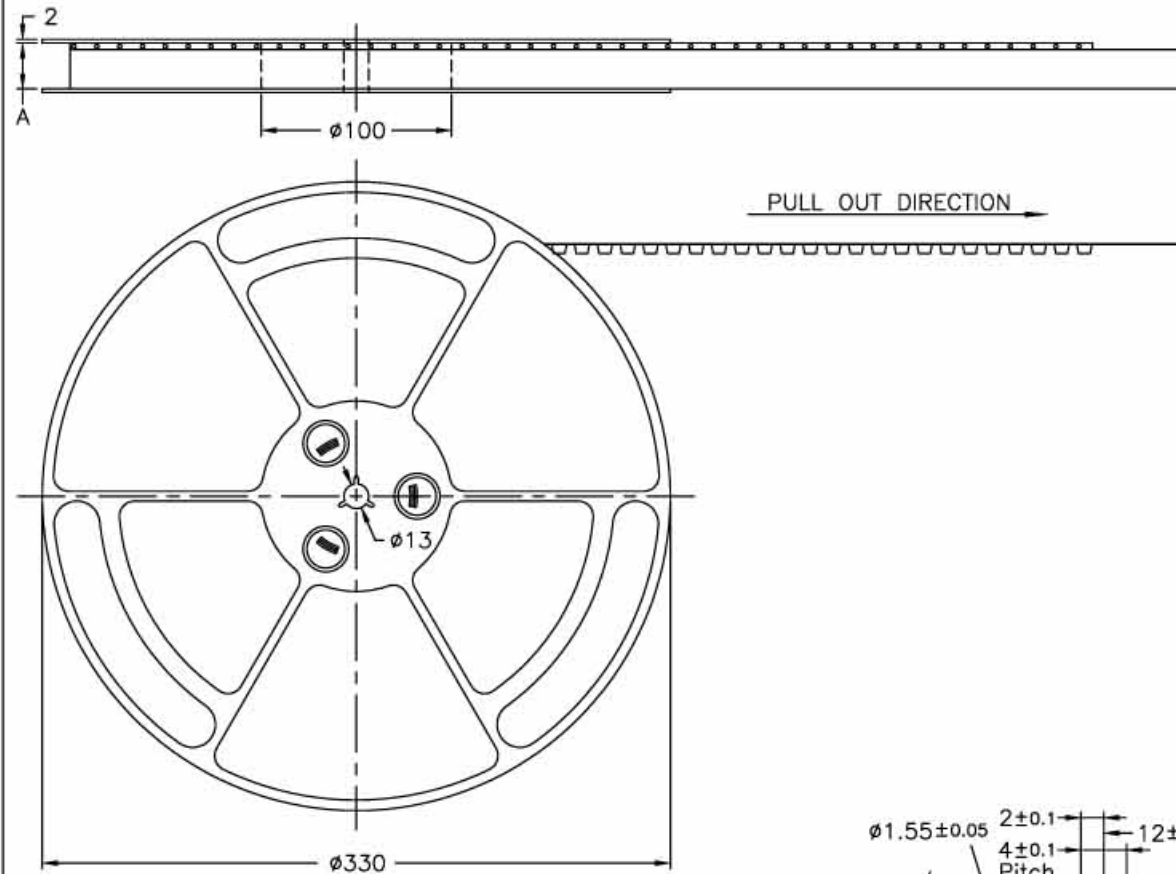
| TOLERANCE UNLESS SPECIFIED | | REV. | B | DR. BY | MATERIAL |
|----------------------------|-------|-------|-----|-----------|----------------------|
| LINEAR | ANGLE | SHEET | 1/3 | Bonnie Li | See Note 1. |
| .X | .X | SCALE | 8/1 | S.T.LIN | See Note 2. |
| .XX | .X | UNIT | mm | S.T.LIN | DATE 9/4/2001 |
| .XXX | | | | | PART NO. See Note 3. |



TITLE 1.0mm Pitch FPC/FFC Connector
DWC NO. C1/BOOK/BOOK/BL117/HP

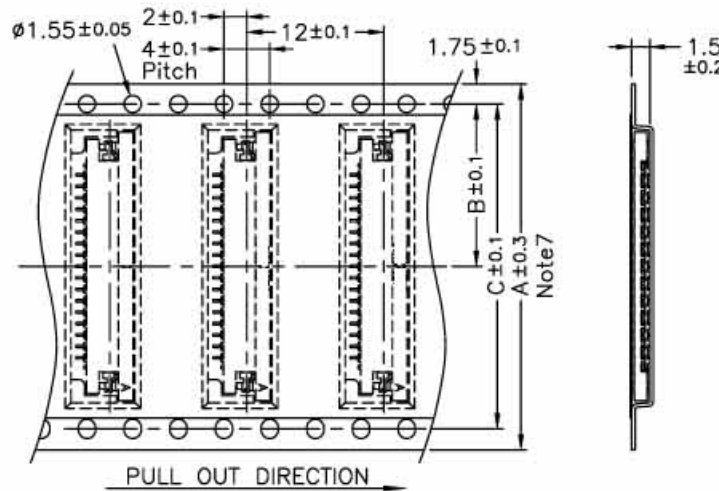
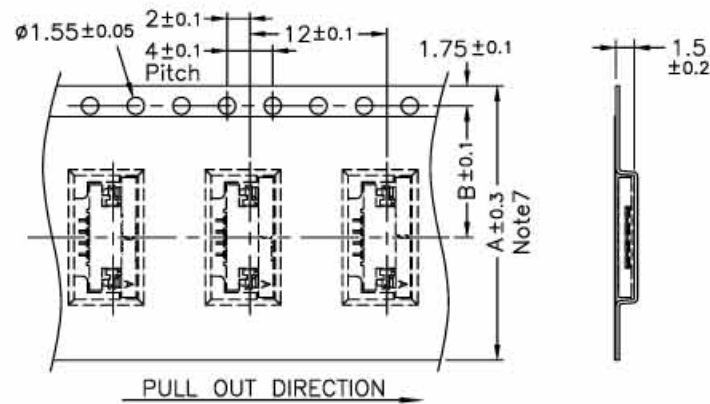
EMBOSSED TAPE PACKING BL117 SERIES RIGHT ANGLE TYPE

| REV. | ECN NO. | DATE |
|------|----------|------------|
| A | RELEASED | 9/4/2001 |
| B | 201024 | 1/24/2002 |
| C | 306007 | 6/18/2003 |
| D | 410001 | 10/19/2004 |



Note:

- 1.10 sprocket hole pitch cumulative tolerance ± 0.2
2. Carrier camber is within 1 mm in 100mm.
3. Material : Black Conductive Polystyrene Alloy
100% recyclable.
4. All dimensions meet EIA-481-B requirements.
5. Thickness : 0.3 ± 0.05 mm.
6. Component load per 13" reel : 3000 pcs.
7. For tape width (dimension A) 24mm a pilot hole is provided on one side.
For tape width (dimension A) 32mm and 44mm pilot holes are provided on both sides.



Note7

| No. of Contacts | Part Number | DIM. A | DIM. B | DIM. C |
|-----------------|--------------------------|--------|--------|--------|
| 4 | BL117-04RL BL117-04RU | 24 | 11.5 | — |
| 10 | BL117-10RL BL117-10RU | | | |
| 11 | BL117-11RL BL117-11RU | 32 | 14.2 | 28.4 |
| 16 | BL117-16RL BL117-16RU | | | |
| 17 | BL117-17RL BL117-17RU | 44 | 20.2 | 40.4 |
| 24 | BL117-24RL BL117-24RU | | | |

| TOLERANCE UNLESS SPECIFIED | | REV. | D | DR. BY | MATERIAL |
|----------------------------|-------|-------|-----|-----------|------------------------|
| LINEAR | ANGLE | SHEET | 3/3 | Bonnie Li | See Note3 |
| .X | .X | SCALE | | CHK. BY | FINISH |
| .XX | .X | UNIT | mm | S.T.LIN | DATE 6/18/2003 |
| .XXX | | | | APP. BY | PART NO. BL117-xxRU&RL |



TITLE 1.0mm Pitch FPC/FFC Connector
DWC NO. C1/BOOK/BOOK/BL117/HP