

REV	MODIFICATION	DATE	DRAW
B	EN-05-0431	04-29-05"	JIM LIU
C	EN-05-0526	05-26-05"	JIM LIU
D	EN-06-1215	12-21-06"	TONY

Ordering Information:
AIOAX-154XXBTXX

Contact Area Plating:

- 05-- 5u" Gold Plating
- 10-- 10u" Gold Plating
- 15-- 15u" Gold Plating

0 : WITH DATE CODE
 1 : WITHOUT DATE CODE
 0 : WITHOUT LOGO
 1 : WITH LOGO
 T : RoHS

DIMENSION IN mm [Inch]		PRD. SPEC. SP0087	ALMITA CO., LTD.	
TOLERANCE UNLESS OTHERWISE SPECIFIED		PKG. SPEC. PPP-AIO-005	TITLE SD/MMC(&4.0)/MINI SD,MS,MS PRO MS DUO,XD,RS MMC(&4.0) 10 IN 1 CONN.	CUSTOMER DRAWING
.X±0.30	X.*±	APPROVE	FILE NO. KFP-087	DWG NO. AIOAX-154XXBXXX
.XX±0.20	.X.*±	CHECK	SIZE A4	PROJ. SHEET 1 / 2
.XXX±0.10	.XX.*±	DRAW	SCALE 3:2	REV D

REV	MODIFICATION	DATE	DRAW
B	EN-05-0431	04-29-05"	JIM LIU
C	EN-05-0526	05-26-05"	JIM LIU
D	EN-06-1215	12-21-06"	TONY

F

F

E

E

D

D

C

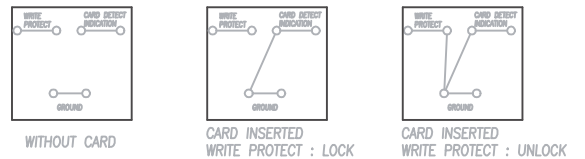
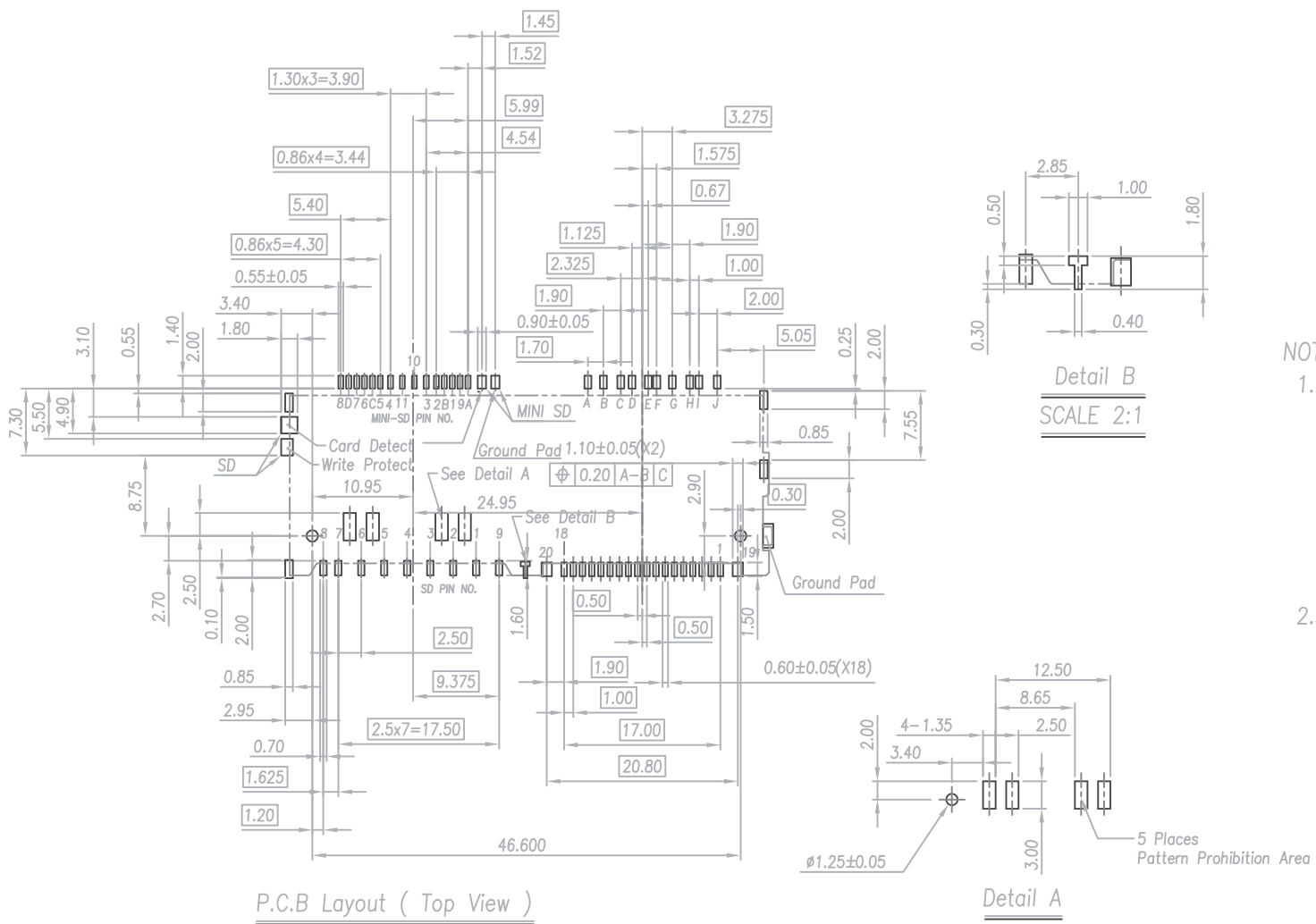
C

B

B

A

A



NOTES:

- Material:
 - Housing: Thermoplastic UL94V-0
 - Color: Black
 - Contact: Phosphor Bronze.
 - RoHS at Solder Tail, See "Ordering Information" for Contact Area Plating
 - Cover: Phosphor Bronze, Nickel plating for all.
- Specification:
 - A. Electrical Characteristics:
 - A-1. Contact Resistance: 40 Milliohms Max.
 - A-2. Dielectric Withstanding Voltage: 500 VAC Max With 1 Minute
 - A-3. Insulation Resistance: 1000 Megaohms Min.
 - A-4. Current Rating: 1 A AC/DC MAX. Rated Voltage: 500 V RMS Min.
 - B. Mechanical Characteristics:
 - B-1. Insertion Force: 9.80 N Max.
 - B-2. Separation Force: 1.00 N Min.
 - B-3. Contact Retention Force: 0.98 N Min. Per Contact
 - B-4. Operating Temperature: -20°C~+60°C

SD & MMC & RS MMC	MINI SD	MS & MS DUO	XD				MMC 4.0		
PIN	NAME	PIN	NAME	PIN	NAME	PIN	NAME	PIN	NAME
1	CD/DAT3	1	CD/DAT3	A	VSS	1	GND	12	D2
2	CMD/DI	2	CMD/DI	B	BS	2	R/B#	13	D3
3	VSS1	3	VSS1	C	VCC	3	RE#	14	D4
4	VDD	4	VDD	D	SDIO	4	CE#	15	D5
5	CLK/SCLK	5	CLK/SCLK	E	Reserved	5	CLE	16	D6
6	VSS2	6	VSS2	F	INS	6	ALE	17	D7
7	DAT0	7	DAT0	G	Reserved	7	WE#	18	VCC
8	DAT1	8	DAT1	H	SCLK	8	WP#	19	CD#
9	DAT2	9	DAT2	I	VCC	9	GND	20	NC
		10		J	VSS	10	DO		
		11				11	D1		

DIMENSION IN mm [Inch]		PROD. SPEC.
TOLERANCE UNLESS OTHERWISE SPECIFIED		SP0087
.X±0.10	X.*±	PKG. SPEC. PPP-A10-005
.XX±0.05	.X.*±	APPROVE
.XXX±	.XX.*±	CHECK
		DRAW

ALMITA CO., LTD.		TITLE	
		SD/MMC(&4.0)/MINI SD,MS,MS PRO	CUSTOMER DRAWING
MS DUO,XD,RS MMC(&4.0) 10 IN 1 CONN.		FILE NO. KFP-087	DWG NO. AIOAX-154XXBXXX
SIZE	A4	PROJ.	SHEET 2 / 2
		SCALE 3:2	REV D