

Pin Type	Interface Dim L	Pin Type	REV	MODIFICATION	DATE	DRAW
Detect	3.5 mm	25,26	C	EN-02-0318	3/18	JACK
General	4.25 mm	All Other Pins	D	EN-02-0330	3/28	JACK
Power	5.0 mm	1,13,38,50	E	EN-05-0637	6/23	TONY

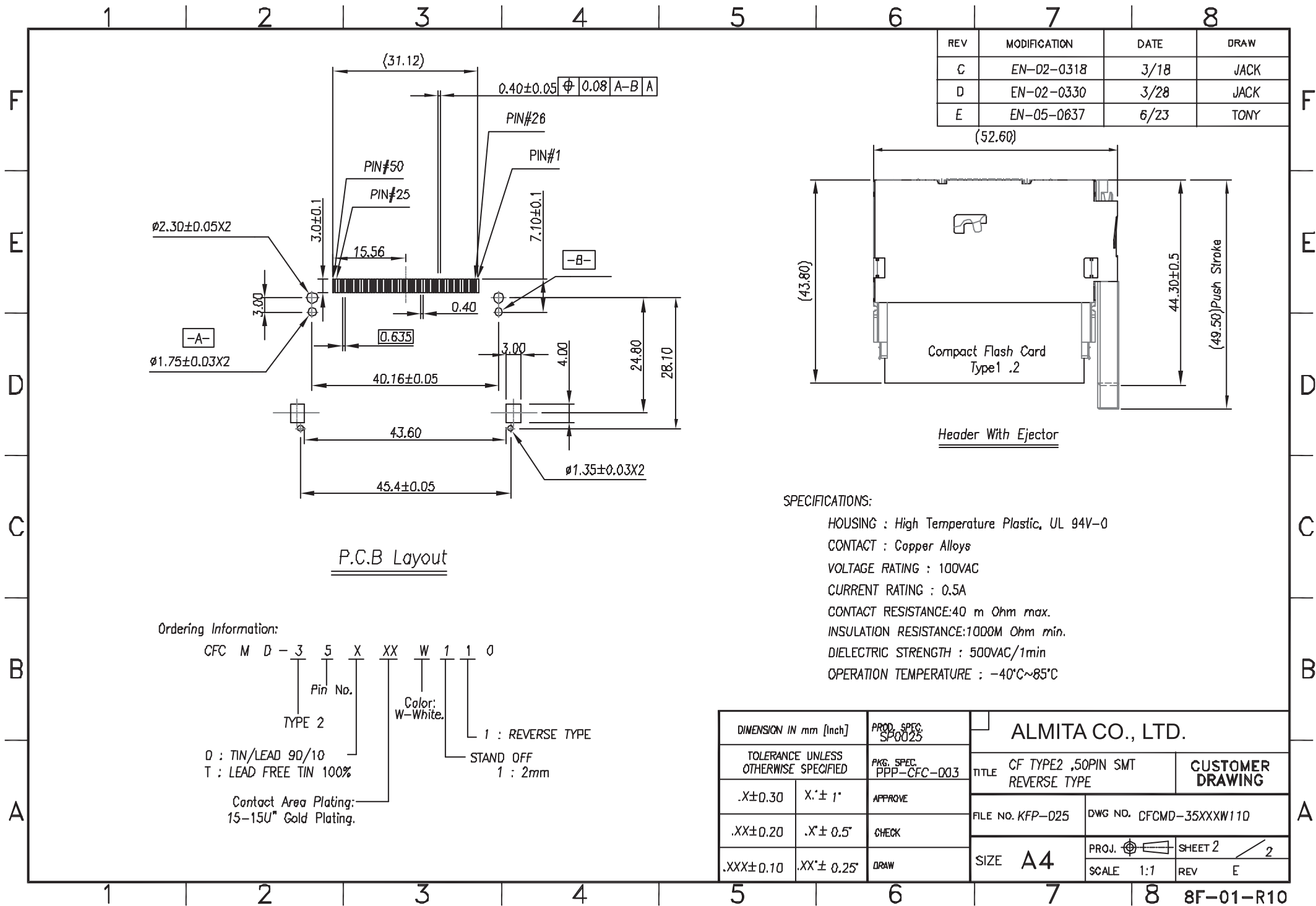
Ordering Information:

CFC M D - 3 5 X XX W 1 1 0
 TYPE 2
 Pin No.
 Color: W-White.
 1 : REVERSE TYPE
 STAND OFF
 1 : 2mm

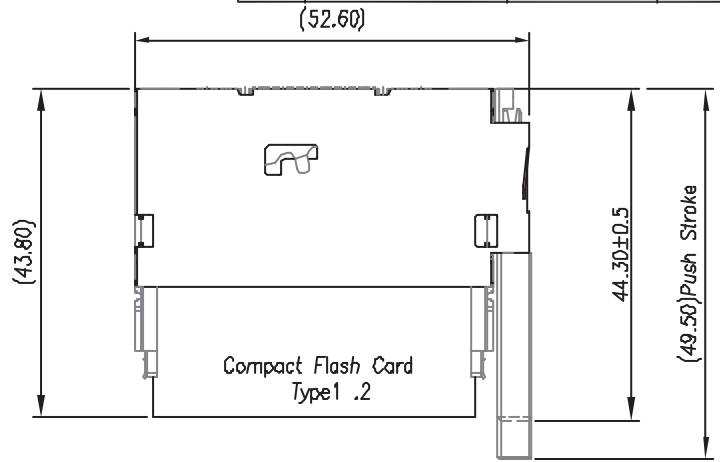
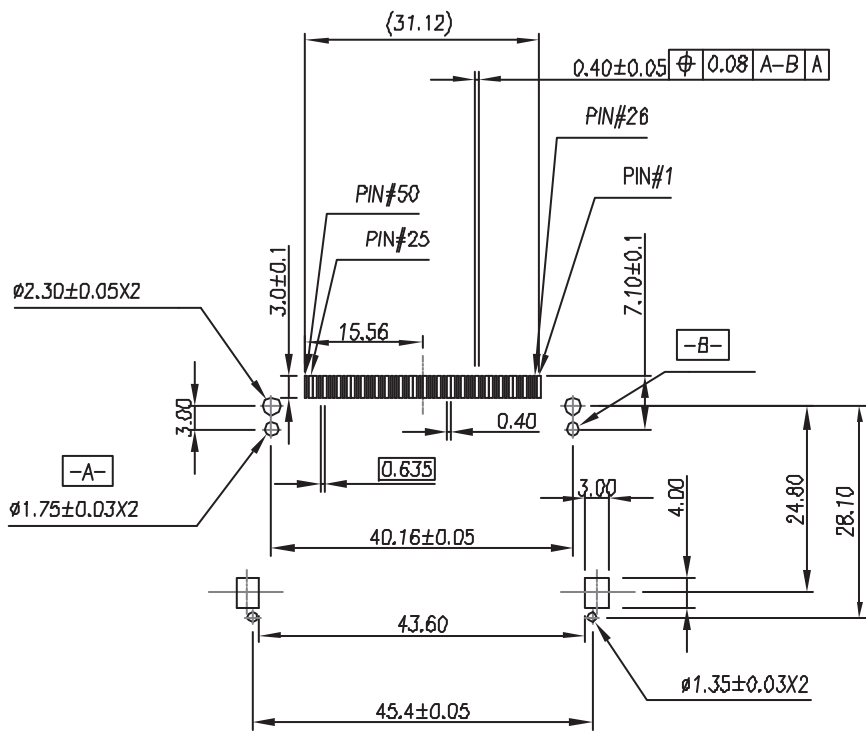
0 : TIN/LEAD 90/10
 T : LEAD FREE TIN 100%

Contact Area Plating:
 15-150° Gold Plating.

DIMENSION IN mm [Inch]		PROD. SPEC. SFD025	ALMITA CO., LTD.	
TOLERANCE UNLESS OTHERWISE SPECIFIED		PKG. SPEC. PPP-CFC-003	TITLE CF TYPE2 ,50PIN SMT REVERSE TYPE	CUSTOMER DRAWING
.X±0.30	X:± 1"	APPROVE	FILE NO. KFP-D25	DWG NO. CFCMD-35XXXW110
.XX±0.20	.X'± 0.5"	CHECK	SIZE A4	PROJ. SHEET 1 / 2
.XXX±0.10	.XX'± 0.25"	DRAW	SCALE 1:1	REV E



REV	MODIFICATION	DATE	DRAW
C	EN-02-0318	3/18	JACK
D	EN-02-0330	3/28	JACK
E	EN-05-0637	6/23	TONY



SPECIFICATIONS:

- HOUSING : High Temperature Plastic, UL 94V-0
- CONTACT : Copper Alloys
- VOLTAGE RATING : 100VAC
- CURRENT RATING : 0.5A
- CONTACT RESISTANCE: 40 m Ohm max.
- INSULATION RESISTANCE: 1000M Ohm min.
- DIELECTRIC STRENGTH : 500VAC/1min
- OPERATION TEMPERATURE : -40°C~85°C

Ordering Information:

CFC M D - 3 5 X XX W 1 1 0

Pin No. TYPE 2 Color: W-White. 1 : REVERSE TYPE

D : TIN/LEAD 90/10 STAND OFF 1 : 2mm

T : LEAD FREE TIN 100%

Contact Area Plating: 15-15U" Gold Plating.

DIMENSION IN mm [Inch]		PROD. SPEC. SP-0025	ALMITA CO., LTD.	
TOLERANCE UNLESS OTHERWISE SPECIFIED		PKG. SPEC. PPP-CFC-003	TITLE	CUSTOMER DRAWING
.X±0.30	.X'± 1"	APPROVE	CF TYPE2 ,50PIN SMT REVERSE TYPE	
.XX±0.20	.X'± 0.5"	CHECK	FILE NO. KFP-D25	DWG NO. CFCMD-35XXXW110
.XXX±0.10	.XX'± 0.25"	DRAW	SIZE A4	PRJ. SHEET 2 / 2
			SCALE 1:1	REV E