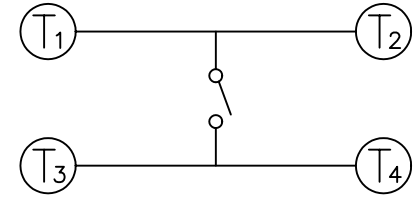
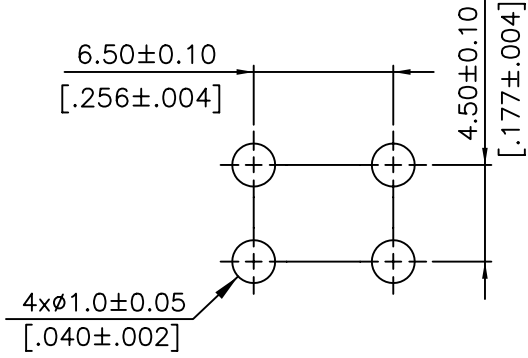
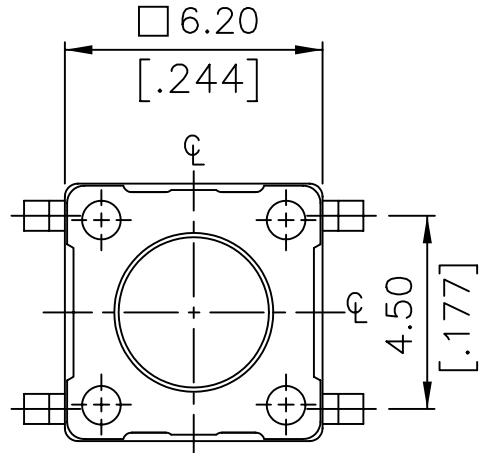


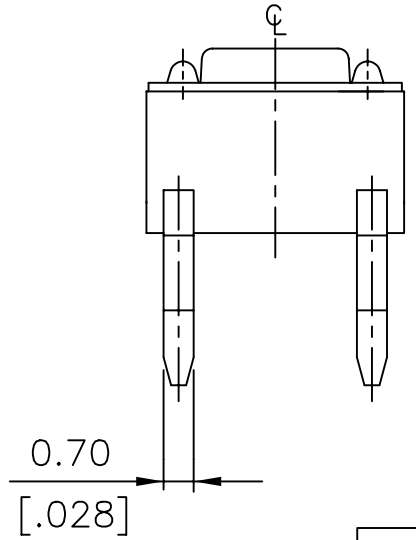
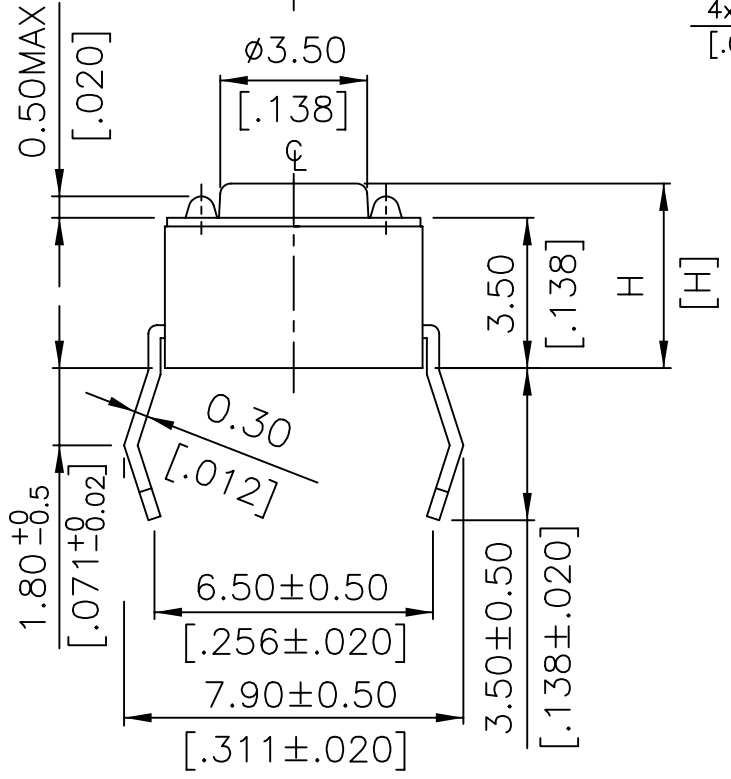
**NOTE:**

1. ALL DIMENSIONS ARE IN MILLIMETERS, BRACKETED DIMENSIONS ARE IN INCHES.
2. GENERAL TOLERANCES MAX. ±0.20mm.
3. MATERIAL & □ : SEE PAGE 3 OF 3.
4. DETAILS OF DTS-64  $\frac{1}{8}$  □ OUTER DIMENSIONS: REFER TO THE DWG.-DTS-64 □ □.



**P.C.B. LAYOUT**

**CIRCUIT DIAGRAM**



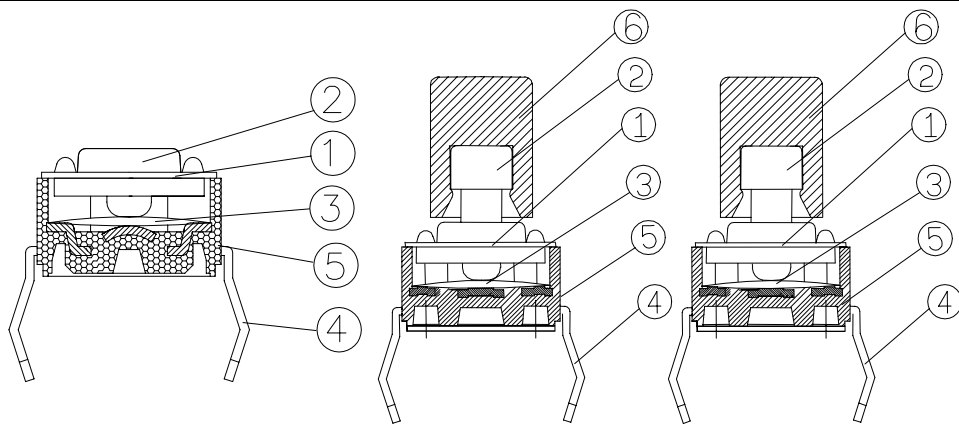
|           |              |
|-----------|--------------|
| DTS-6 6 □ | 13.0 [0.512] |
| DTS-6 5 □ | 9.5 [0.374]  |
| DTS-6 3 □ | 7.0 [0.275]  |
| DTS-6 2 □ | 5.0 [0.197]  |
| DTS-6 1 □ | 4.3 [0.169]  |
| PROD.     | NO. H        |

|                  |                             |
|------------------|-----------------------------|
| DTS-6 □ □ □      | 先銀壓後沖, 雙面銀壓 (Ag/0.3 μm MIN) |
| △ DTS-6 □ □ □ -G | 先沖後鍍銀 (Ag/1.5 μm MIN)       |

|      |     |             |          |       |
|------|-----|-------------|----------|-------|
| △    |     |             |          |       |
| △    |     |             |          |       |
| △    | B   |             |          |       |
| △    | A   | DWG.REL.    | 02.13'98 |       |
| ZONE | REV | DESCRIPTION | DATE     | APPD. |

|         |              |                         |   |
|---------|--------------|-------------------------|---|
| APPD:   | QTY:         |                         | PART NAME:                                      |
| CHKD:   | SCALE: 8 : 1 |                         | TACTILE SWITCH 6X6<br>(MECHANICAL CONTACT TYPE) |
| DR:     | REV: B       | UNITS: mm               | DWG NO:   |
| DESIGN: |              | PART NO: DTS-6 □ □ (-G) | FINISH:   |
|         |              |                         | R D 5 P 6                                       |

| ITEM | DESC     | Q'TY | MATERIALS                                      | TREATMENT               | REMARK |
|------|----------|------|--|-------------------------|--------|
| 1.   | COVER    | 1    | STAINLESS STEEL                                | NONE                    | -      |
| 2.   | STEM     | 1    | HIGH - TEMP<br>THERMOPLASTIC<br>NYLON UL 94V-0 | →                       | ①      |
| 3.   | CONTACT  | 1    | PHOSPHOR<br>BRONZE                             | WITH SILVER<br>CLADDING | -      |
| 4.   | TERMINAL | 1    | BRASS  | WITH SILVER<br>CLADDING | -      |
| 5.   | BASE     | 1    | HIGH - TEMP<br>THERMOPLASTIC<br>NYLON UL 94V-0 | MOLDED BLACK            | -      |
| 6.   | CAP      | 1    | THERMOPLASTIC<br>ABS                           | →                       | ①      |



Remark:

① Prod. No. : D T S - 6

K = With Cap

=Plating before punching

G =punching before Plating

Dimension H:

1 = 4.3 mm

2 = 5.0 mm

3 = 7.0 mm

44(48)= 7.3 mm

5 = 9.5 mm

6 = 13 mm

Color Of Stem For  
Operating Force:

K = Black , 100g.

N = Brown , 160g.

R = Red , 260g.

S = Salmon, 320g.

Y = Yellow, 520g.

|      |              |      |
|------|--------------|------|
| H    | 工<工變>99037 號 | 楊豐富  |
| G    | 工<工變>99017 號 | 楊豐富  |
| F    | 工<聯>8015 號   | 楊豐富  |
| E    | 工<工變>8003 號  | 楊豐富  |
| D    | 工<聯>8001 號   | 楊豐富  |
| C    | 工<聯>007 號    | 施教郎  |
| B    | 工<聯>027 號    | 施教郎  |
| A    | DWG.REL.     | 施教郎  |
| REV. | ECO. NO.     | APPD |

|                         |                        |
|-------------------------|------------------------|
| TITLE:                  | APPD. : 楊豐富            |
| TACTILE SWITCH 6x6      | CHKD. : 吳振中            |
| PRROD.NO. : DTS□-6□□□-□ | PR. : 楊佩儒              |
| FILE NO. : E-B-CT01     | REV : H SHEET : 1 of 1 |