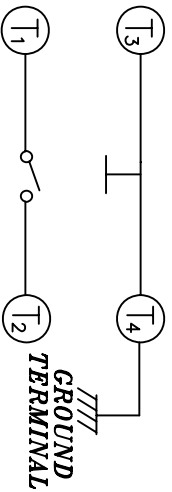
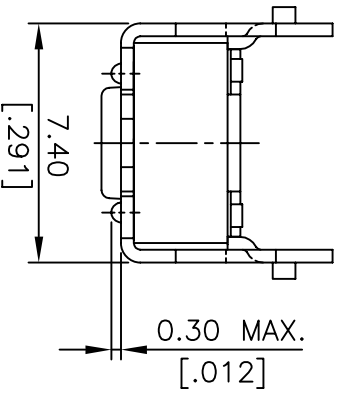
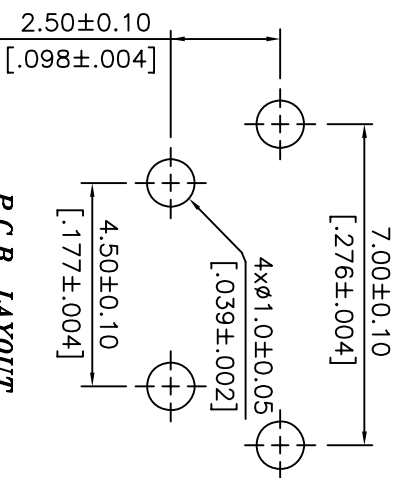


NOTE:

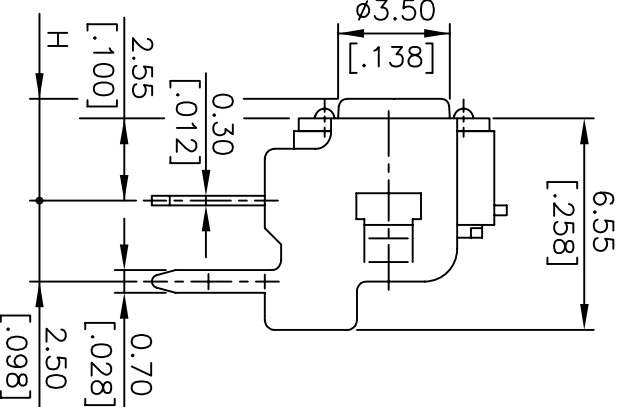
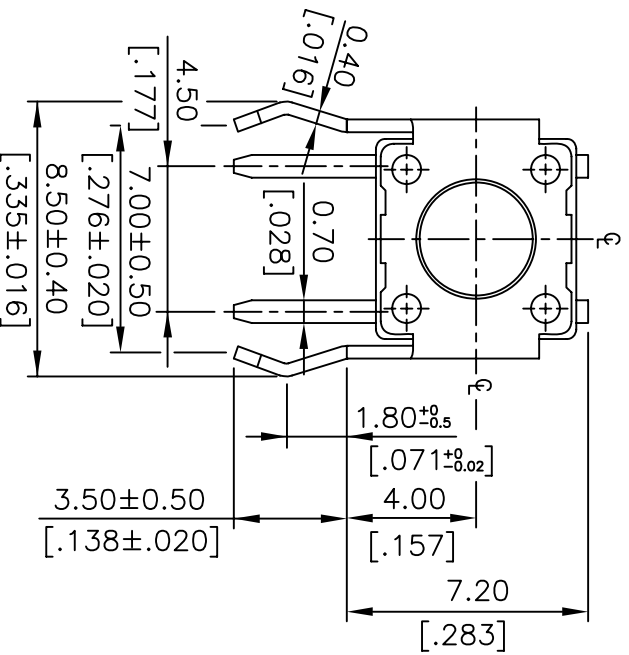
1. ALL DIMENSIONS ARE IN MILLIMETERS, BRACKETED DIMENSIONS ARE IN INCHES.
2. GENERAL TOLERANCES MAX.±0.20mm.
3. MATERIAL & □ : SEE PAGE 3 OF 3.
4. DETAILS OF DTSA-64 $\frac{1}{8}$ □ OUTER DIMENSIONS: REFER TO THE DWG.- DTSA-64 □ □.



CIRCUIT DIAGRAM



P.C.B. LAYOUT



DTSA-6 6 □	11.85[.467]
DTSA-6 5 □	8.35[.329]
DTSA-6 3 □	5.85[.230]
DTSA-6 2 □	3.85[.152]
DTSA-6 1 □	3.15[.124]
PROD. NO.	H

DTSA-6 □ □ □	先銀壓後沖, 雙面銀壓(Ag/0.3 μm MIN)
DTSA-6 □ □ □ -G	先沖後鍍銀 (Ag/1.5 μm MIN)

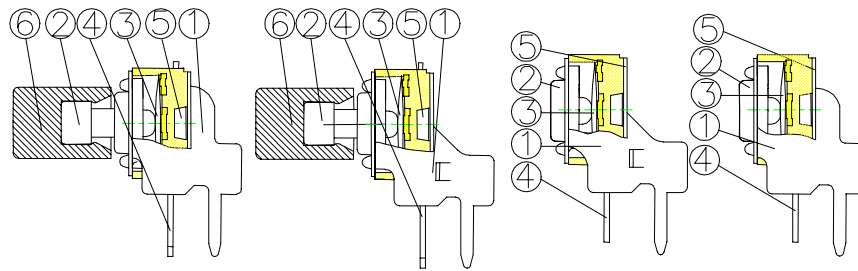
△		
△		
△	B	
△	A	DWG. REL.
△		02.13.98
△		DATE
△		APPD.

APPD:	QTY:
CHKD:	SCALE: 6 : 1
DR:	UNITS: mm
DESIGN:	REV: B

PART NO:	DTSA-6 □ □ (-G)
MAT'L:	
FINISH:	

PART NAME:	TACTILE SWITCH R/A 6X6 (MECHANICAL CONTACT TYPE)
DWG NO:	R D 5 P 6 A

ITEM	DESC	Q'TY	MATERIALS	TREATMENT	REMARK
1.	COVER	1	STEEL	TIN PLATED 100u"MIN	
2.	STEM	1	THERMOPLASTIC NYLON UL 94V-0	→	①
3.	CONTACT	1	PHOSPHOR BRONZE	WITH SILVER CLADDING	
4.	TERMINAL	1	BRASS	WITH SILVER CLADDING	
5.	BASE	1	THERMOPLASTIC NYLON UL 94V-0	MOLDED BLACK	
6.	CAP	1	THERMOPLASTIC ABS	→	①



① Prod. No. : D T S - 6

Prod. Series:

A = Right Angle Type

K = With Cap

See Chart On Page 1 Of 3

=Plating before punching

G =punching before Plating

Operating Force:

K = Black , 100g.

N = Brown , 160g.

R = Red , 260g.

S = Salmon, 320g.

Y = Yellow, 520g.

Dtsa - : ①Cover With New

②Operating Force : U,K,N,R

Dtsa - D : Cover With Old

K	工<工變>99037 號	
J	工<工變>99017 號	楊豐富
I	工<聯>8015 號	楊豐富
H	工<工變>8003 號	楊豐富
G	工<聯>8001 號	楊豐富
F	工技通 7008 號	楊豐富
E	工<聯>7005 號	楊豐富
D	工變聯 6019 號	楊豐富
C	工<聯>007 號	施教郎
B	工<聯>027 號	施教郎
A	DWG.REL.	施教郎
REV	ECO. NO.	APPD.

TITLE:	TACTILE SWITCH 6x6	APPD. :	
PRROD. NO.:DTSA -6	-	CHKD. :	
FILE NO.:E-B-CT02		PR. :	
		REV : K	SHEET : 1 of 1