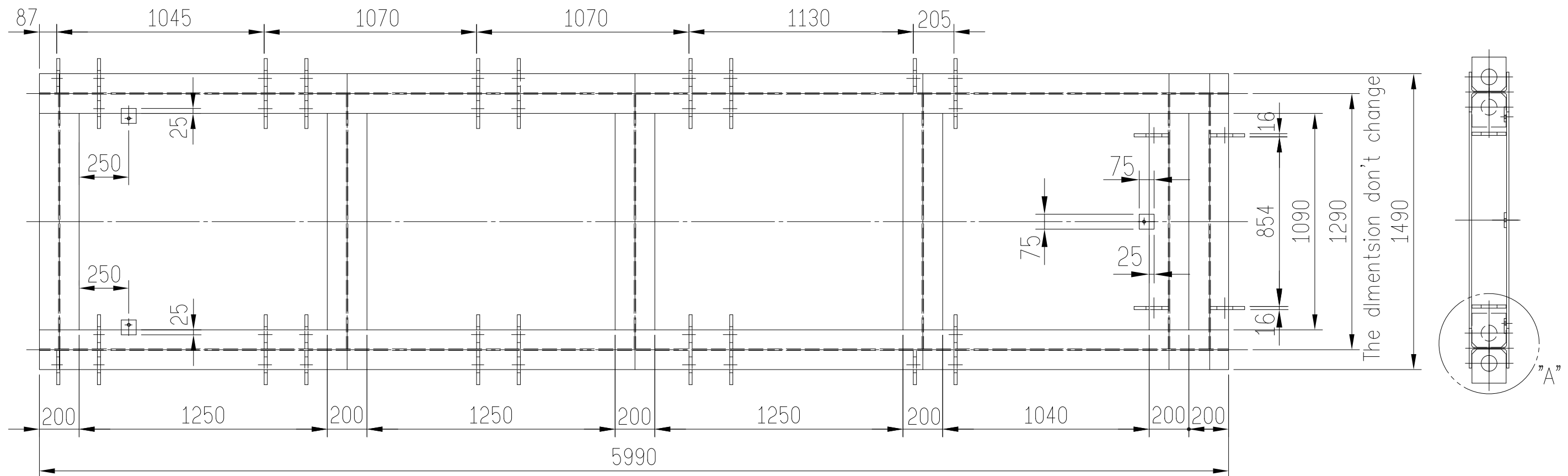


Remark:

- <01>.Fasten rebar by steel wire & put H beam on top of it , ensure its levelling by level gauge.
- <02>.Cast H beam into concrete base , careful not to shift it during liquid concrete pouring.

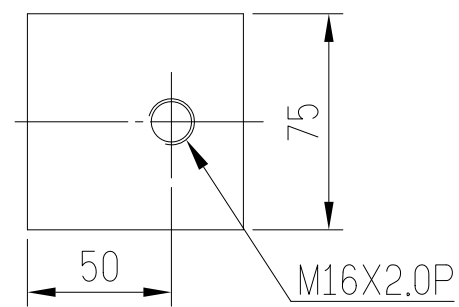
- <03>.Foundation H beam specs:200X200.
- <04>.Mixing ratio of concrete : cement/sand/gravel/ :1:2:3.

If there is any on the dimension, also please change A relatively.

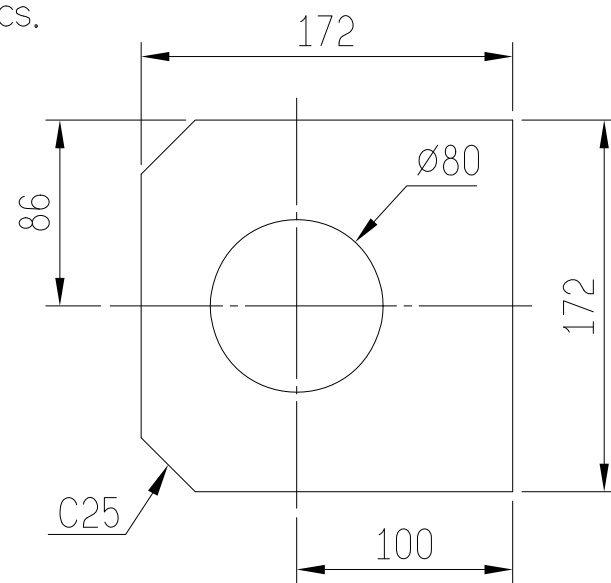


Material:

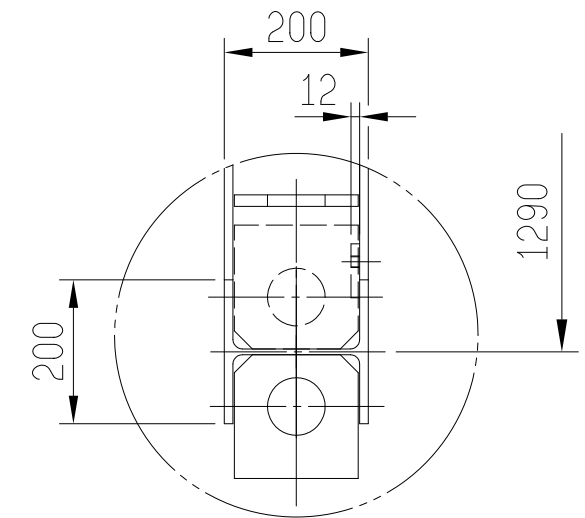
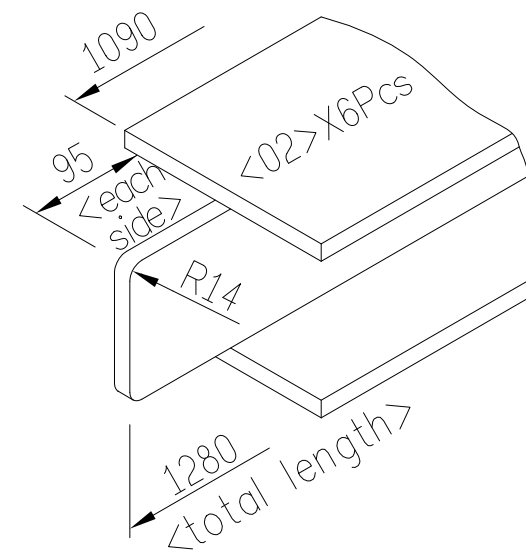
- <01> 200X200 H-steelX5990LX2Pcs.
- <02> 200X200 H-steelX1280LX6Pcs.
- <03> 16mm thickX172X172-40Pcs
- <04> 12mm thickX75X75-3Pcs



<04>-3Pcs



<03>-40Pcs



"A" detailed diagram

Remark: <01>If H-steel specification be change, that 1090L must be change.
 <Because dimension 1290L don't change>.



鋁台精機廠股份有限公司
 ZITAI-PRECISION MACHINERY CO., LTD

MODEL ZDC-730T

No.

73DEBASE2

Applied sect

H steel frame soldering drawing for M/C foundation