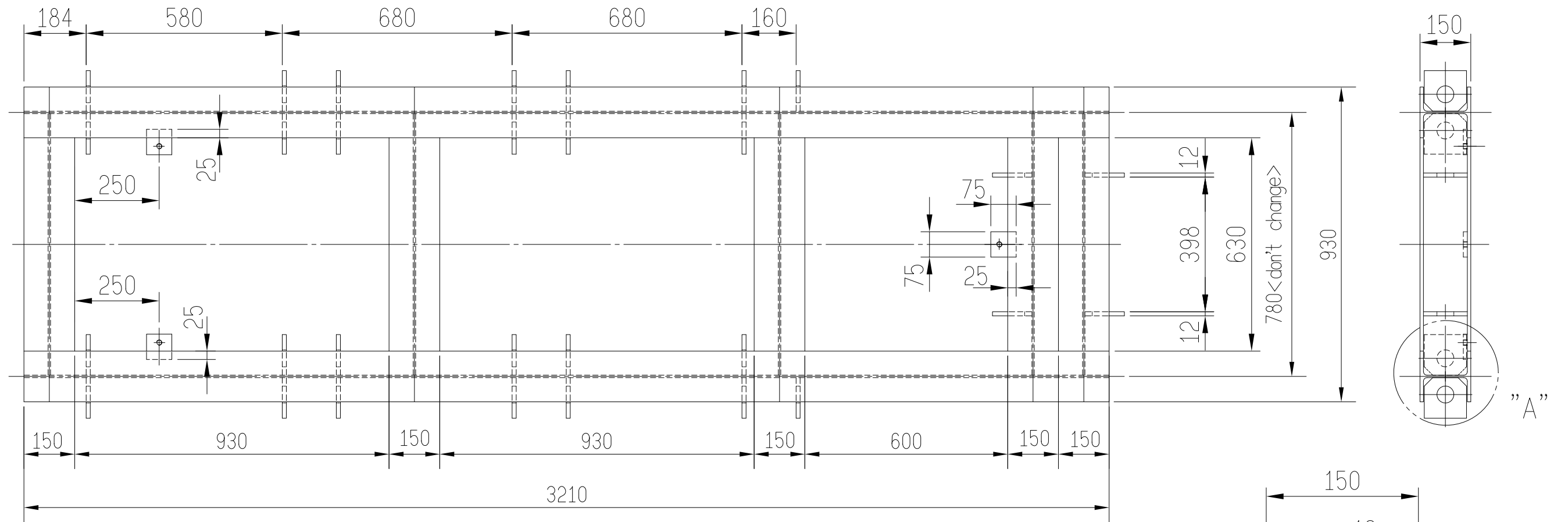


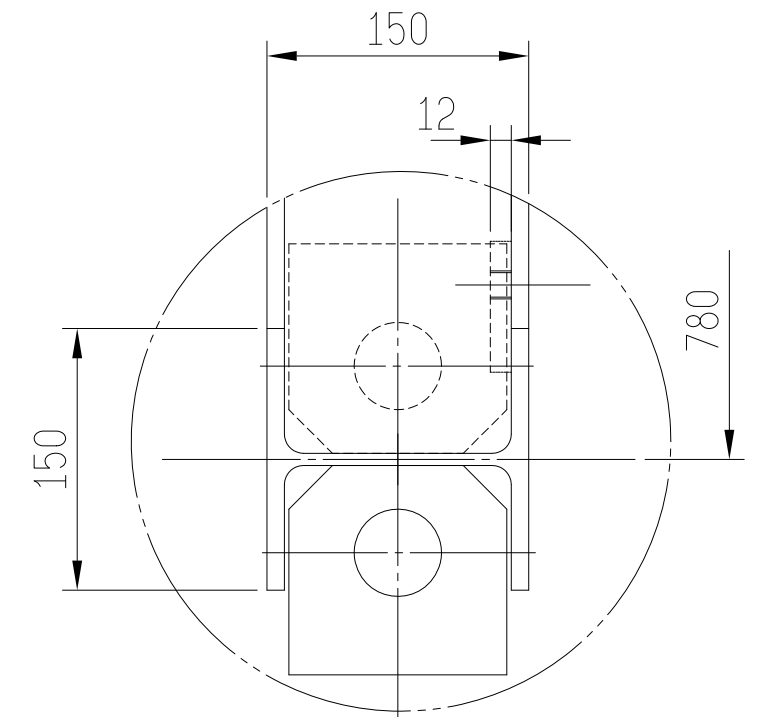
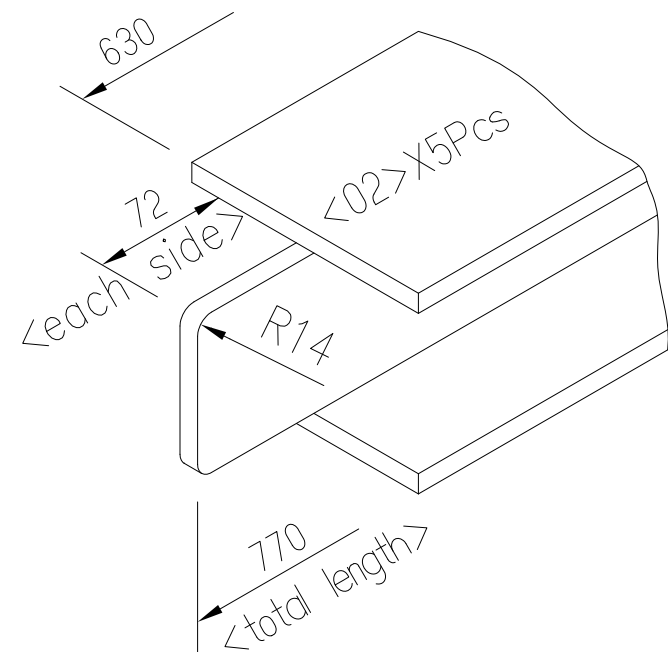
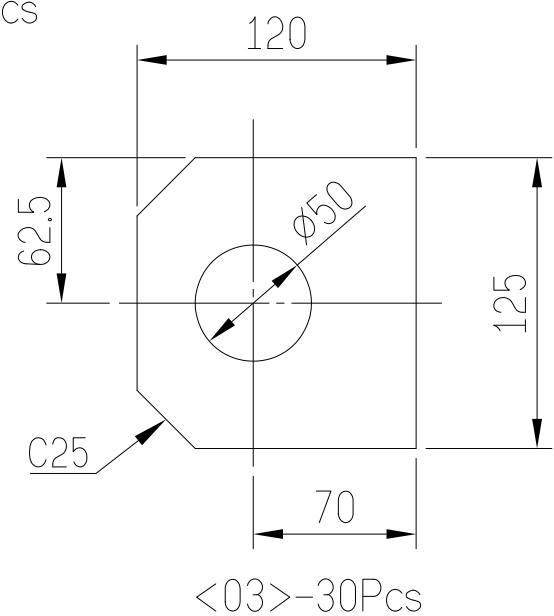
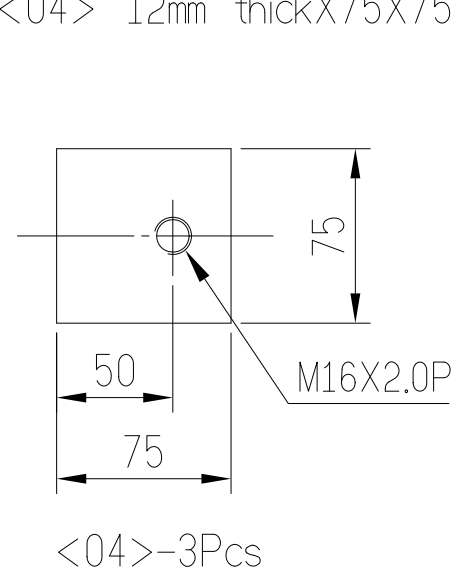
*There cannot be any fixed interference in the area of tie bar pulling out

<If there is any change on the dimension, also please change A relatively.>



Material:

- <01> 150X150 H-steelX3210LX2Pcs
- <02> 150X150 H-steelX770LX5Pcs
- <03> 12mm thickX125X120-30Pcs
- <04> 12mm thickX75X75-3Pcs



"A" Detailed diagram

Remark: <01>If H-steel specification be change, that 630L must be change.
 <Because dimension 780L cannot change.>