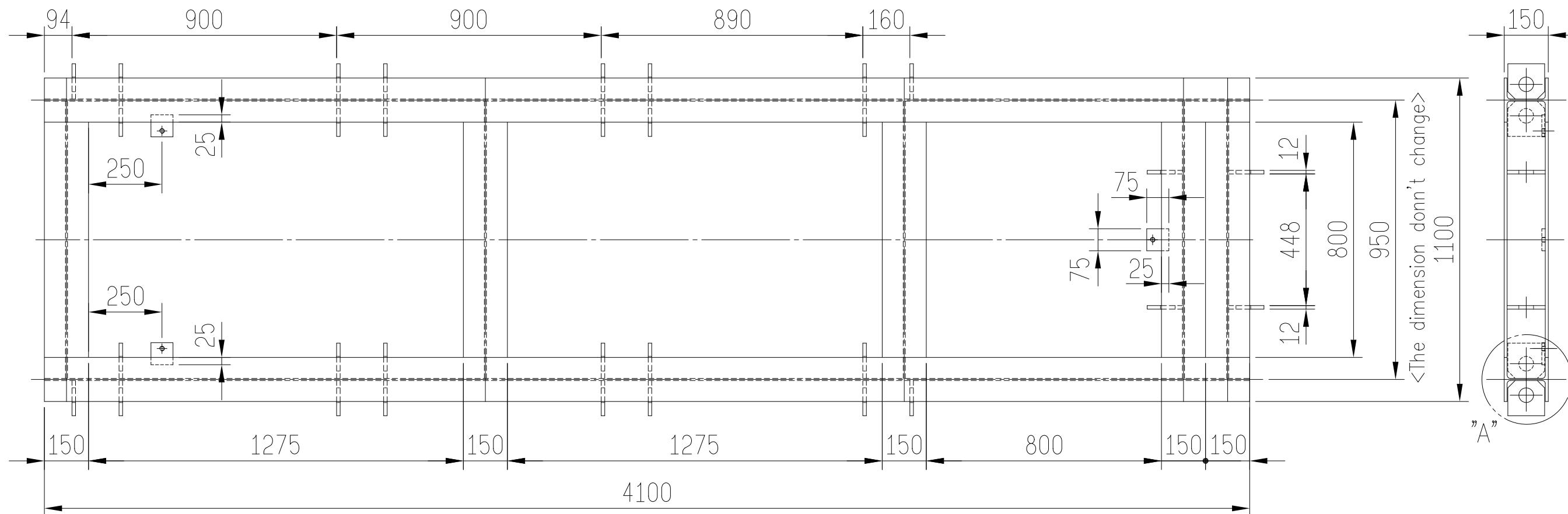


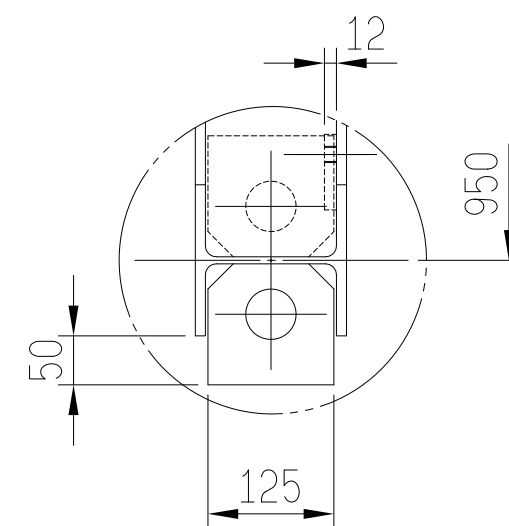
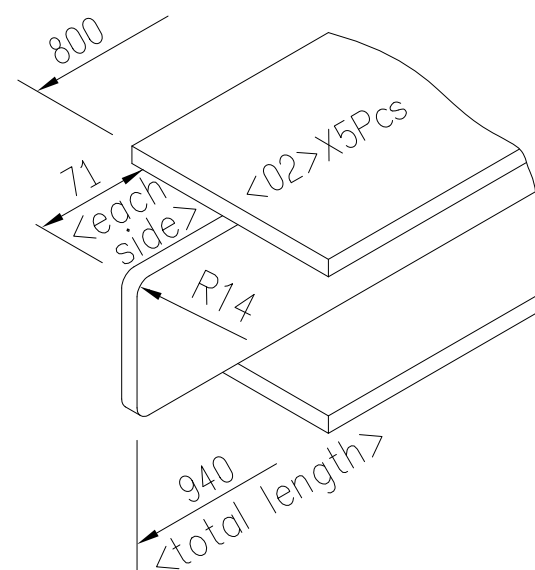
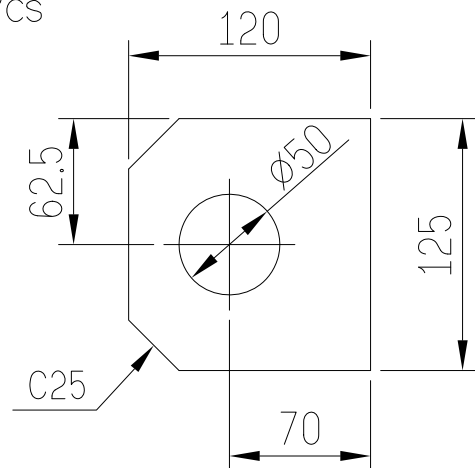
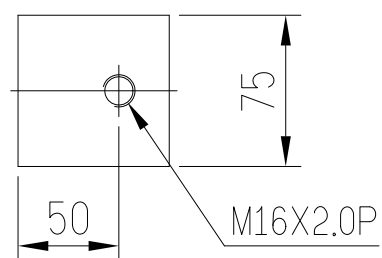
Remark:

- <01>.Fasten rebar by steel wire & put H beam on top of it , ensure its levelling by level gauge.
- <02>.Cast H beam into concrete base , careful not to shift it during liquid concrete pouring.
- <03>.Foundation H beam specs:150X150.
- <04>.Mixing ratio of concrete : cement/sand/gravel/ :1:2:3.



Material:

- <01> 150X150 H-steelX4100L-2Pcs
- <02> 150X150 H-steelX940L-5Pcs
- <03> 12mm thickX120X125-32Pcs
- <04> 12mm thickX75X75-3Pcs



"A" detailed diagram

Remark: <01>If H-steel specification be change, that 800L much be change.
<Because dimension 950L don't change>.



鋁台精機廠股份有限公司
ZITAI-PRECISION MACHINERY CO., LTD

MODEL ZDC-420T

No.

M1CPDEBASE1

Applied sect

H steel frame soldering drawing for M/C foundation