

NOTES:

1. Rating: 300V 8A  
PITCH: 3.81 mm
2. Insulation Withstands Voltage:  
AC 1600V/MIN
3. Insulation Resistance:  
500MΩ or more at DC500V
4. Using Temperature Range:  
-40°C ~ +105°C
5. Suitable Electric Wire: AWG 28 ~16
6. RoHS Compliance

Normal Geometric Tolerancing		Normal dimension Tolerances	
—	//	≡	⊥
0 to 100	0.2	0 to 10	0.2
over 100 to 150	0.3	over 10	0.3
over 150	0.5		

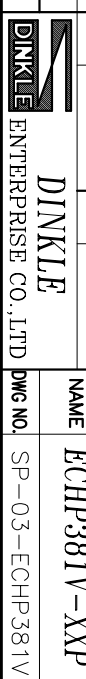
Total Pitch Tolerances	Normal dimension Tolerances
0<L≤30	±0.20
30<L≤63	±0.25
63<L≤90	±0.30
90<L≤115	±0.35
115<L≤150	±0.40
150<L≤200	±0.45
200<L≤250	±0.50
250<L≤320	±0.55

P	2P	3P	4P	5P	6P	7P	8P	9P	10P	11P	12P	13P
B	13.81	17.62	21.43	25.24	29.05	32.86	36.67	40.48	44.29	48.10	51.91	55.72
C	18.50	22.30	26.10	29.90	33.80	37.60	41.40	45.10	49.00	52.80	56.60	60.40
P	14P	15P	16P	17P	18P	19P	20P	21P	22P	23P	24P	
B	59.53	63.34	67.15	70.96	74.77	78.58	82.39	86.20	90.01	93.82	97.63	
C	64.20	68.00	71.90	75.72	79.52	83.22	87.12	90.92	94.72	98.52	102.42	

REV.	CONTENT	CHK.	DATE

DWG.	MKB	DATE	09.08.07	UNITS	MM	SHEET/OF	1/1
CHK.		DATE		SCALE	3:1		
APP.		DATE		NAME	ECHP381V-XXP		
				DWG NO.	SP-03-ECHP381V		

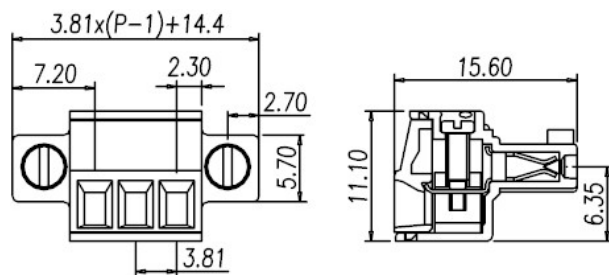
ITEM	NAME OF PART	MATERIAL	NOTES
3	NUT	COPPER ALLOY	M2.5x0.45
2	SOLDER PIN	COPPER ALLOY	Tin Plated
1	HOUSING	PA66	UL94-V0 GREEN



Plugs for pluggable terminal blocks / EC & ESD series



**EC381VM**



**Pitch: 3.81 mm**

Approval		
Technical Data	UL	IEC
Rated voltage	300V	130V
Rated current	8A	8A
Wire range		1.5mm <sup>2</sup>
Solid wire (AWG)	28-14	
Stranded wire (AWG/mm <sup>2</sup> )	28-14	
Rated surge voltage (UL/IEC/Max.)	1.6 / 1.25 / 3 KV	
Torque (Lb-in)	1.7	
Screw	M2	
Wire strip length	6~7mm	
Pole	Cat. No.	
02	EC381VM-02P	
:	:	
:	:	
24	EC381VM-24P	